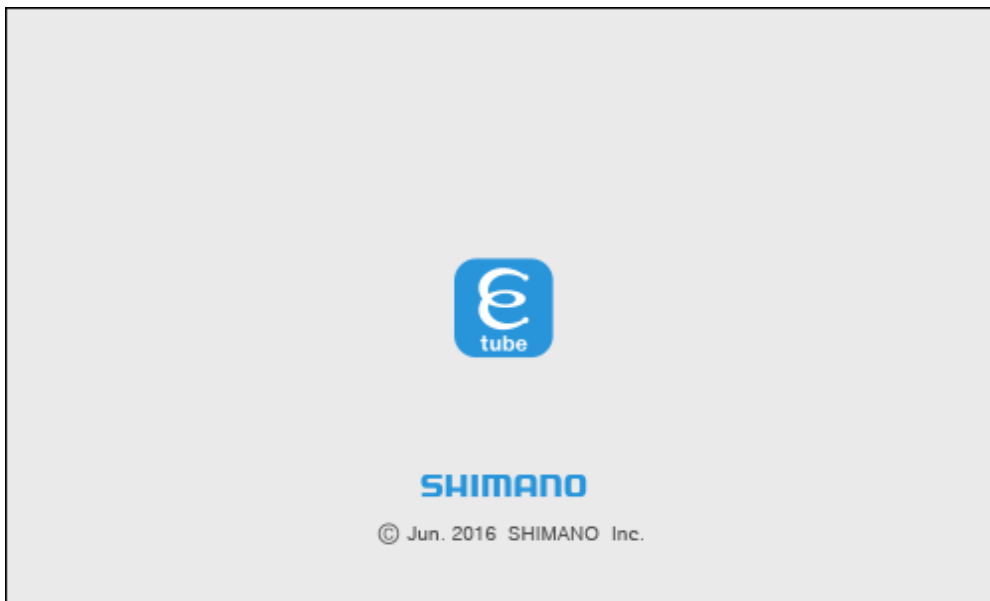


SHIMANO



Help Manual (E-BIKE)



Thank you for purchasing Shimano products.

- This instruction manual explains the operation of the E-TUBE PROJECT. Be sure to read this manual before use in order to fully utilize the functions.
- In order to use the E-TUBE PROJECT, either the SM-PCE1 or SM-PCE02 interface is required.

Check the following support site for the latest support information.

<http://e-tubeproject.shimano.com>

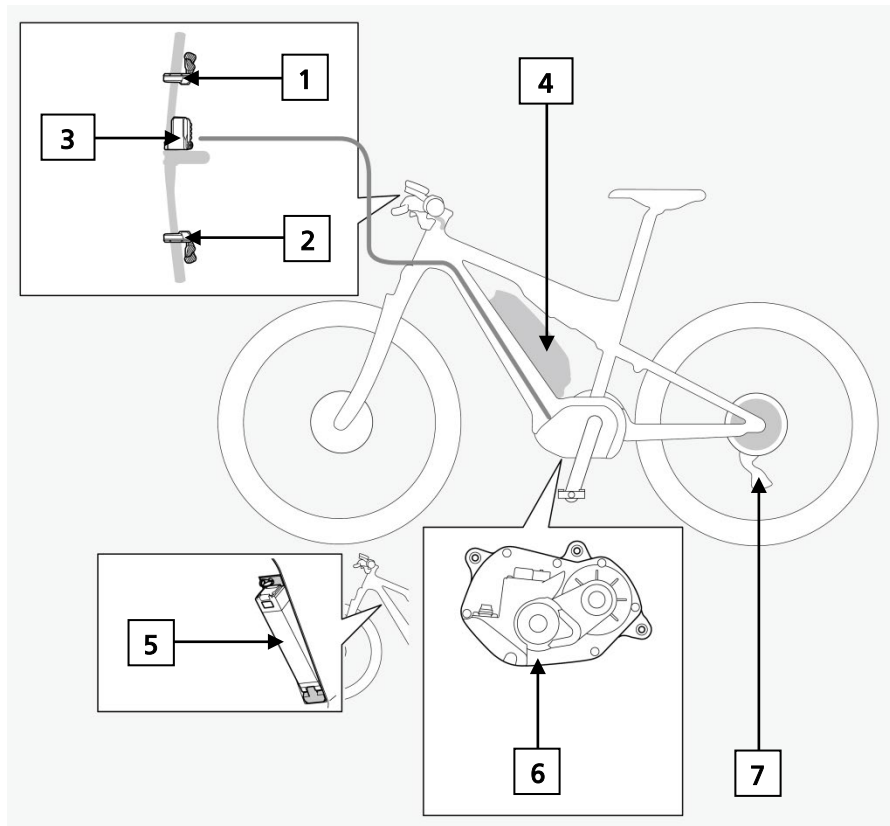
CONTENTS

Model corresponding to each part.....	4
SHIMANO STEPS E8000 series	4
SHIMANO STEPS E7000/E6100/E5000 series	5
SHIMANO STEPS E6000 series	6
CUSTOMIZE	7
SHIMANO STEPS E8000 series	7
SHIMANO STEPS E7000/E6100/E5000 series.....	8
SHIMANO STEPS E6000 series	9
Drive unit setting	10
SHIMANO STEPS E8000 series	10
SHIMANO STEPS E7000/E6100/E5000 series.....	12
SHIMANO STEPS E6000 series	15
Display monitor settings.....	17
SHIMANO STEPS E8000 series	17
SHIMANO STEPS E7000/E6100/E5000 series.....	20
SHIMANO STEPS E6000 series	22
Switch setting.....	24
SHIMANO STEPS E8000 series	24
SHIMANO STEPS E7000/E6100/E5000 series.....	25
SHIMANO STEPS E6000 series	26
Switch mode setting	27
SHIMANO STEPS E8000 series	27
SHIMANO STEPS E6000 series	28
Switch function setting.....	29
SHIMANO STEPS E8000 series	29
SHIMANO STEPS E7000/E6100/E5000 series.....	32
SHIMANO STEPS E6000 series	35
Derailleur adjustment setting	37
SHIMANO STEPS E7000/E6100/E5000 series.....	37
SHIMANO STEPS E6000 series	39
Motor unit gear setting.....	41
SHIMANO STEPS E7000/E6100/E5000 series.....	41
SHIMANO STEPS E6000 series	43
Multi shift mode setting.....	44

SHIMANO STEPS E8000 series	44
SHIMANO STEPS E7000/E6100/E5000 series.....	45
SHIMANO STEPS E6000 series	46
UNIT LOG ACQUISITION	47
SHIMANO STEPS E8000 series	47
SHIMANO STEPS E7000/E6100/E5000 series.....	48
SHIMANO STEPS E6000 series	49
Error check	50
ABOUT THIS DOCUMENT	52
REGISTERED TRADEMARKS AND TRADEMARKS.....	52

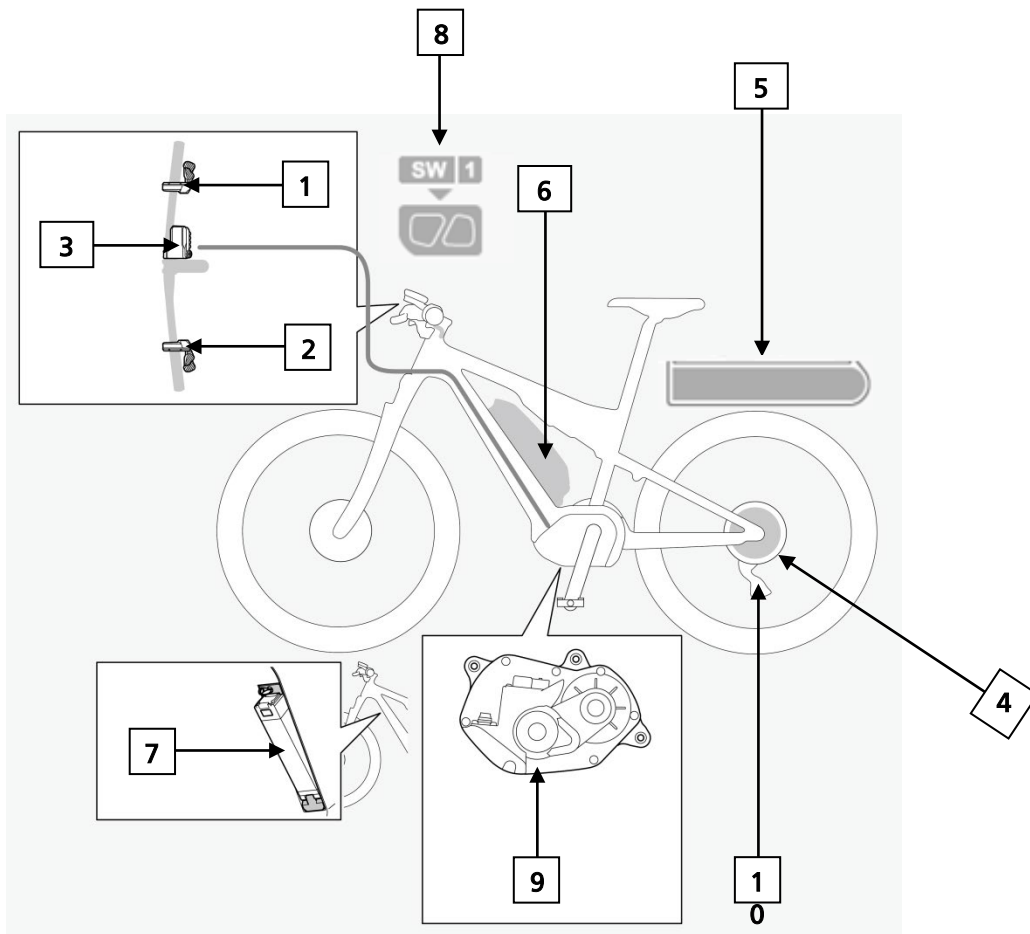
Model corresponding to each part

SHIMANO STEPS E8000 series



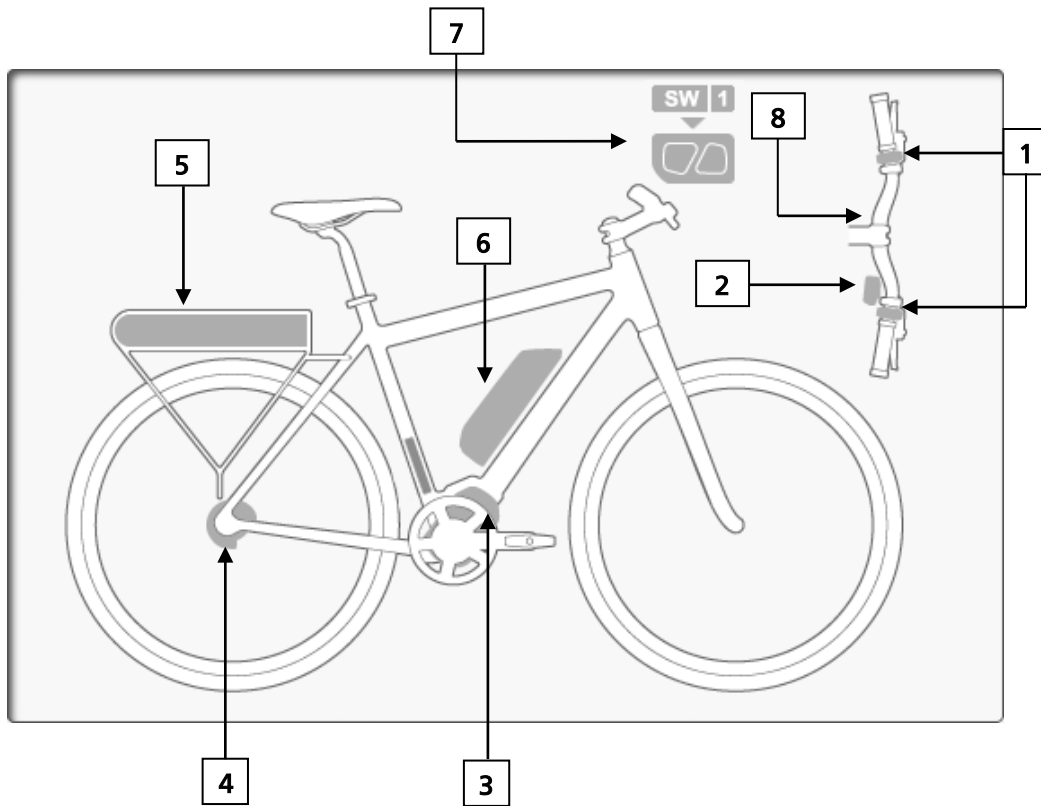
1. SW-E6000/SW-E6010-R/SW-E7000-R/SW-M8050-R/SW-M9050-R/SW-S705
2. SW-E6000/SW-E6010-L/SW-E7000-L/SW-E8000-L/SW-M8050-L/SW-M9050-L
3. SC-E8000/SC-E6010/SC-E6100/SC-E7000/EW-EN100
4. BT-E8010/BT-E8014/BM-E8010
5. BT-E8020/BM-E8020
6. DU-E8000/DU-E8080
7. RD-M9050/RD-M8050

SHIMANO STEPS E7000/E6100/E5000 series



1. SW-E6010-R, SW-E7000-R, SW-E6000, SW-S705
2. SW-E6010-L, SW-E7000-L, SW-E8000-L
3. SC-E6100, SC-E7000, EW-EN100
4. MU-S705, MU-UR500
5. BT-E6000, BT-E6001
6. BT-E6010, BT-E8010, BT-E8014
7. BT-E8020
8. SW-M9050-L/R, SW-M8050-L/R
9. DU-E5000, DU-E6100, DU-E6110, DU-E7000
10. RD-M8050-GS, RD-M9050-GS, RD-M9050-SGS

SHIMANO STEPS E6000 series

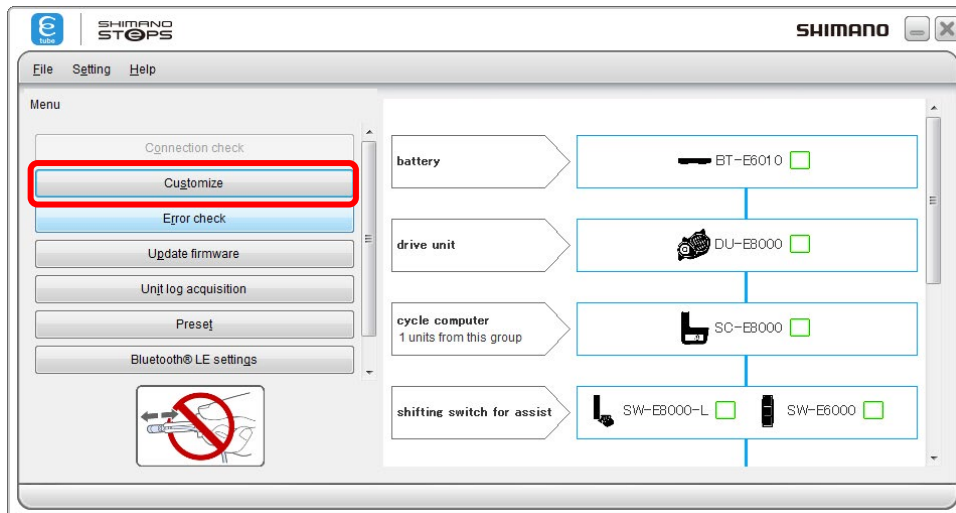


1. SW-E6000, SW-E6010-L/R
2. SW-S705
3. DU-E6000, DU-E6001, DU-E6002, DU-E6010, DU-E6012, DU-E6050
4. MU-S705, MU-UR500, RD-M8050-GS, RD-M9050-GS, RD-M9050-SGS
5. BT-E6000
6. BT-E6010, BT-E8010, BT-E8014, BT-E8020
7. SW-M9050-L/R, SW-E7000-R, SW-M8050-R
8. SC-E6000, SC-E6010

CUSTOMIZE

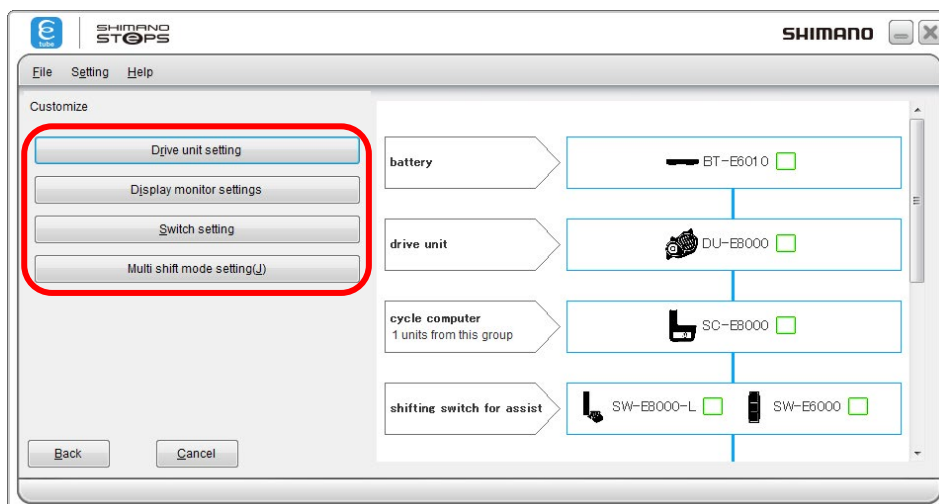
SHIMANO STEPS E8000 series

1. Click [Customize] in the main menu screen.



(Main menu screen)

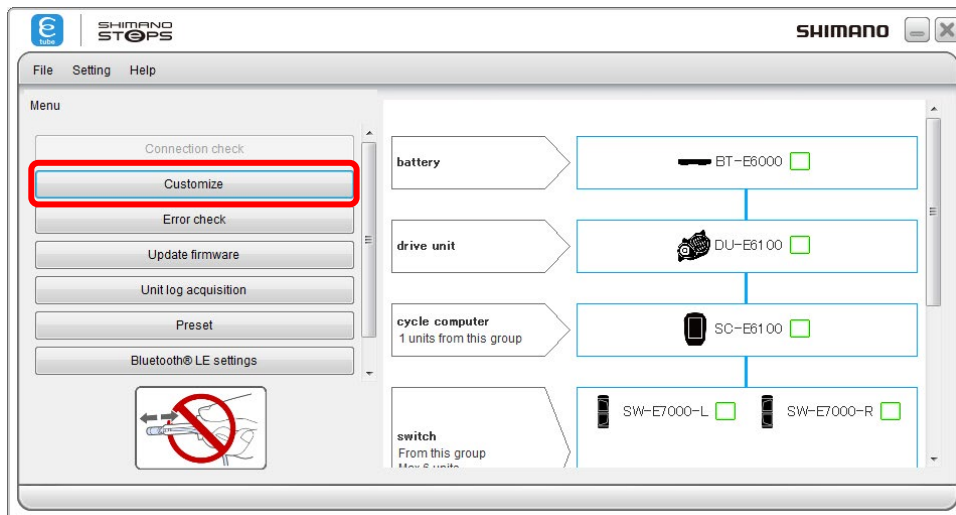
2. Click [Drive unit setting], [Display monitor settings], [Switch setting], [Multi shift mode setting], in the customize menu screen to go to each setting screen.



(Customize screen)

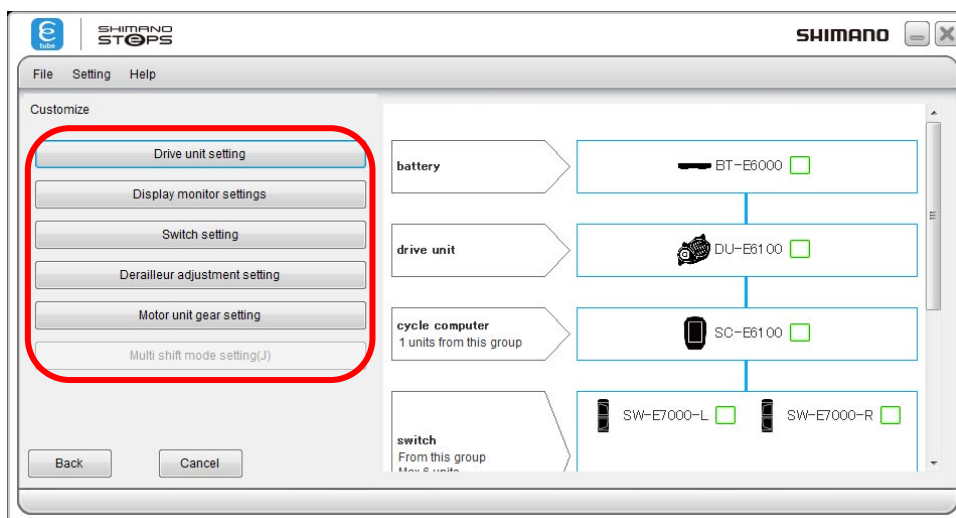
SHIMANO STEPS E7000/E6100/E5000 series

1. Click [Customize] in the main menu screen.



(Main menu screen)

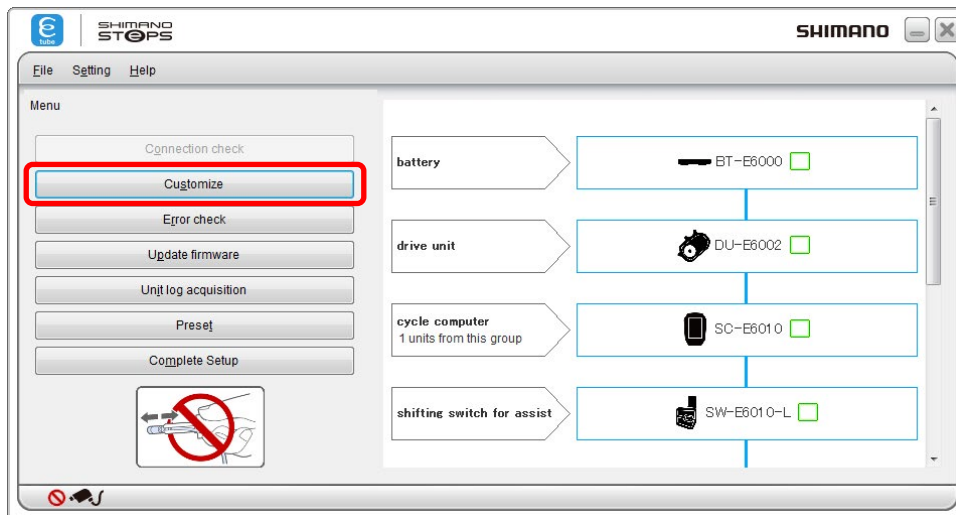
2. From the Customize menu screen, click [Drive unit setting], [Display monitor settings], [Switch setting], [Derailleur adjustment setting], [Motor unit gear setting], or [Multi shift mode setting] to move to the respective setting screen.



(Customize screen)

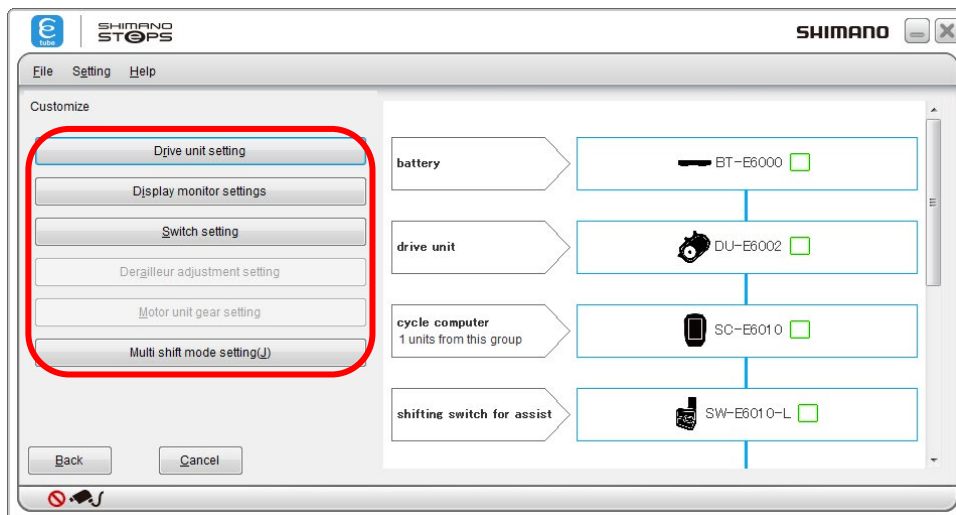
SHIMANO STEPS E6000 series

1. Click [Customize] in the main menu screen.



(Main menu screen)

2. Click [Drive unit setting], [Display monitor settings], [Switch setting], [Derailleur adjustment setting], [Motor unit gear setting], or [Multi shift mode setting] in the customize menu screen to go to each setting screen.



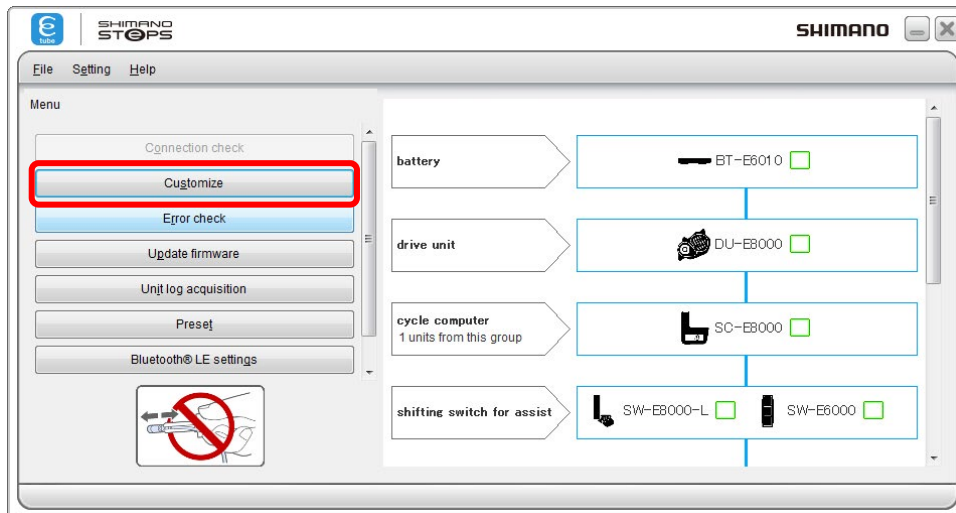
(Customize screen)

Drive unit setting

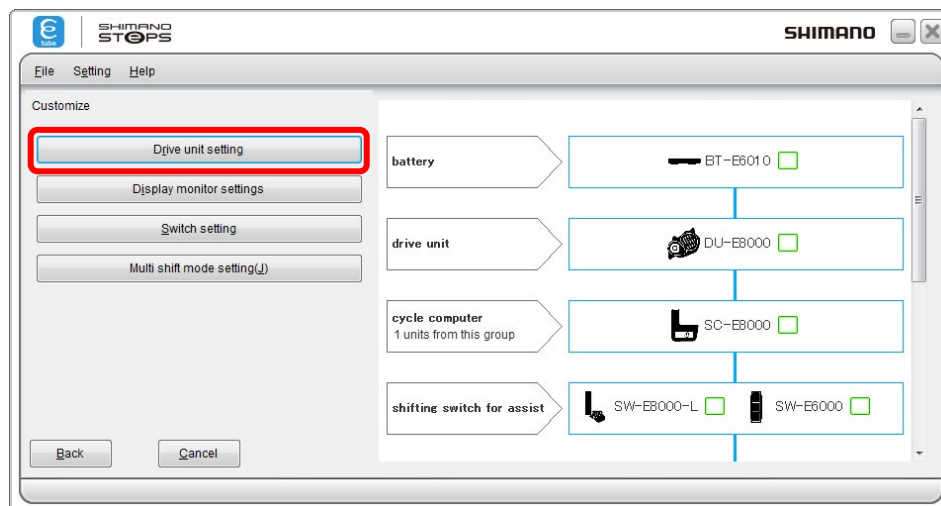
Configure the settings of the drive unit.

SHIMANO STEPS E8000 series

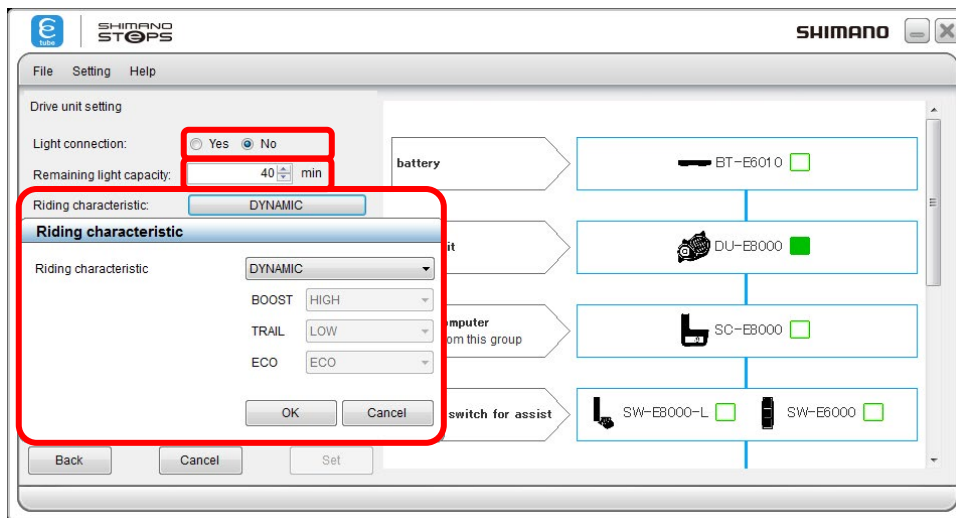
1. Click [Customize] in the main menu screen.



2. Click [Drive unit setting] in the customize menu screen.



3. Click to select setting.

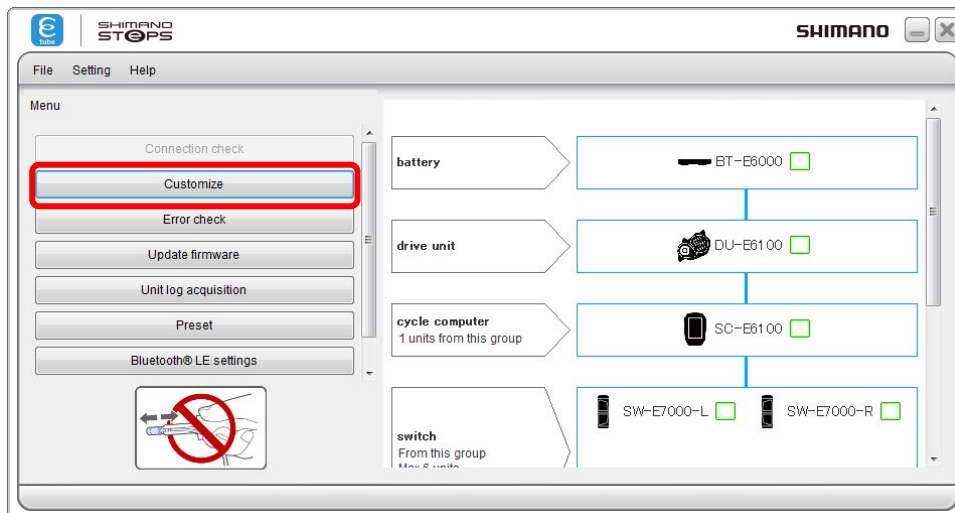


The items that can be set are as follows.

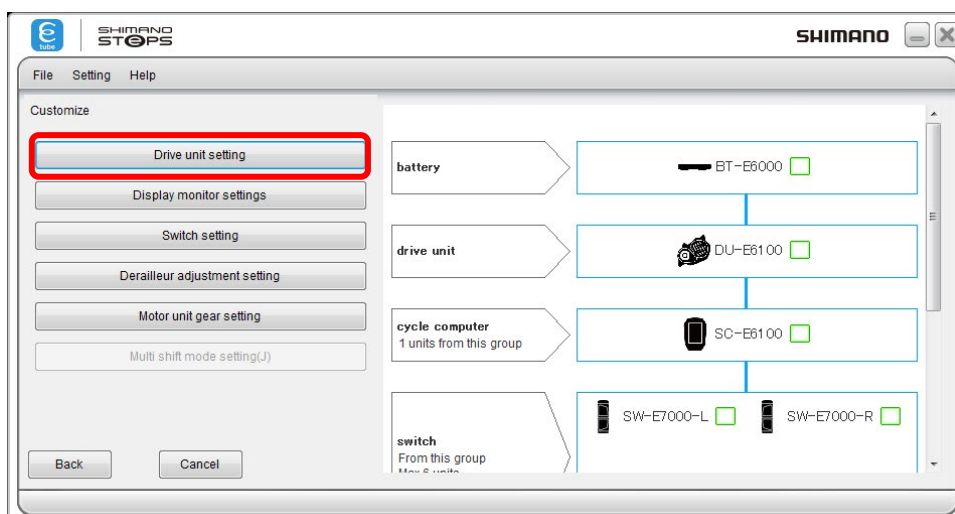
Item	Description
[Light connection]	Select [Yes] when connecting a light or [No] when not connecting a light.
[Remaining light illumination time]	<p>Remaining light illumination time after stopping assist can be set from 0 to 180 minutes (in 5 minute units).</p> <p>If the value is not entered in 5 minute units, it will be set using 5 minute units as follows.</p> <ul style="list-style-type: none"> · 0 to 2 entered for ones digit: 0 · 3 to 7 entered for ones digit: 5 · 8 to 9 entered for ones digit: 10 <p>* Only a value larger than the set value can be set.</p>
[Riding characteristic]	<p>The riding characteristic setting window is displayed. You can perform the setting of the riding characteristic type.</p> <p>This can only be set using DU-E8000.</p> <p>* BOOST, TRAIL, or ECO can only be changed when you select CUSTOMIZE.</p>

SHIMANO STEPS E7000/E6100/E5000 series

1. Click [Customize] in the main menu screen.

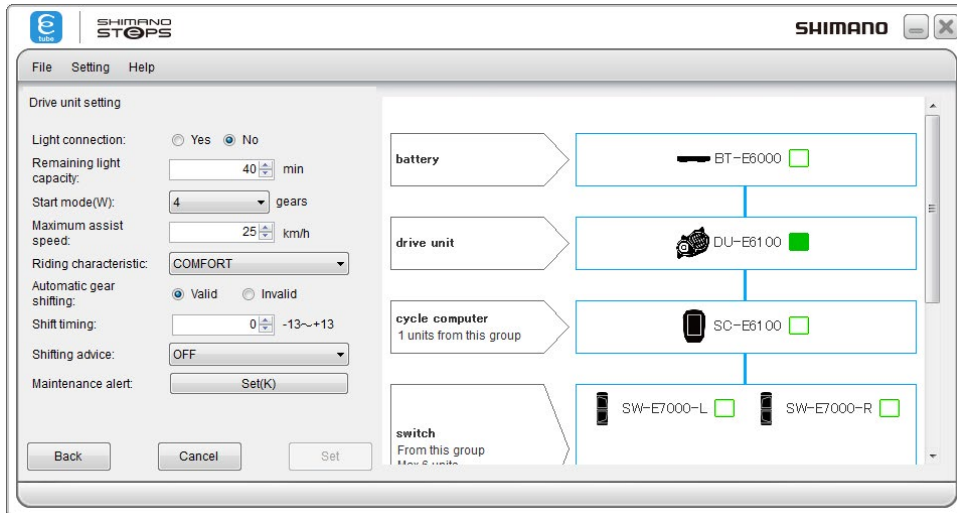


2. Click [Drive unit setting] in the customize menu screen.

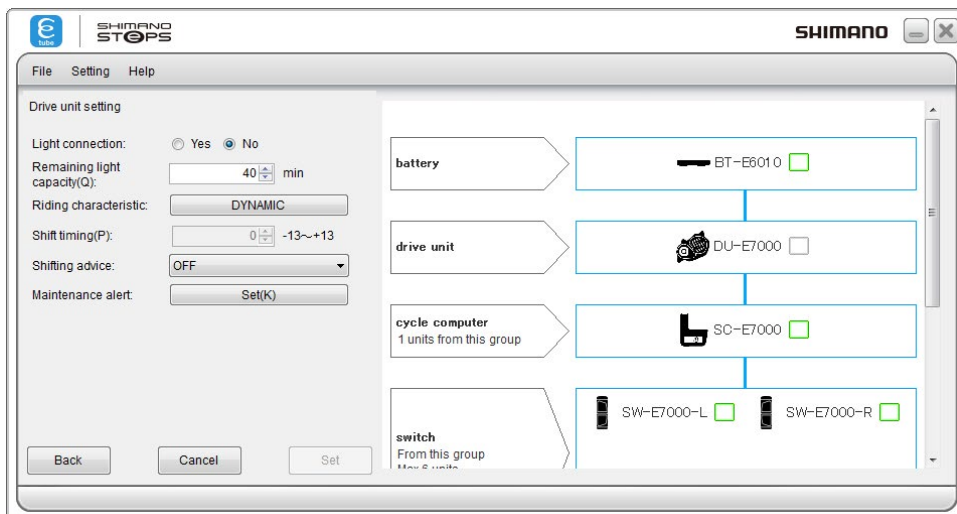


3. Click on each item to select the settings.

<DU-E5000/DU-E6100/DU-E6110>



<DU-E7000>

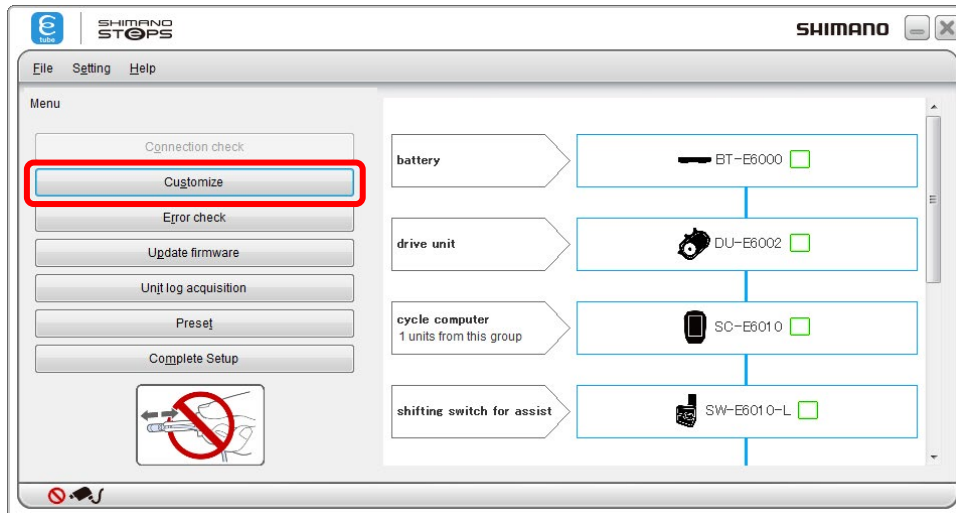


The items that can be set are as follows.

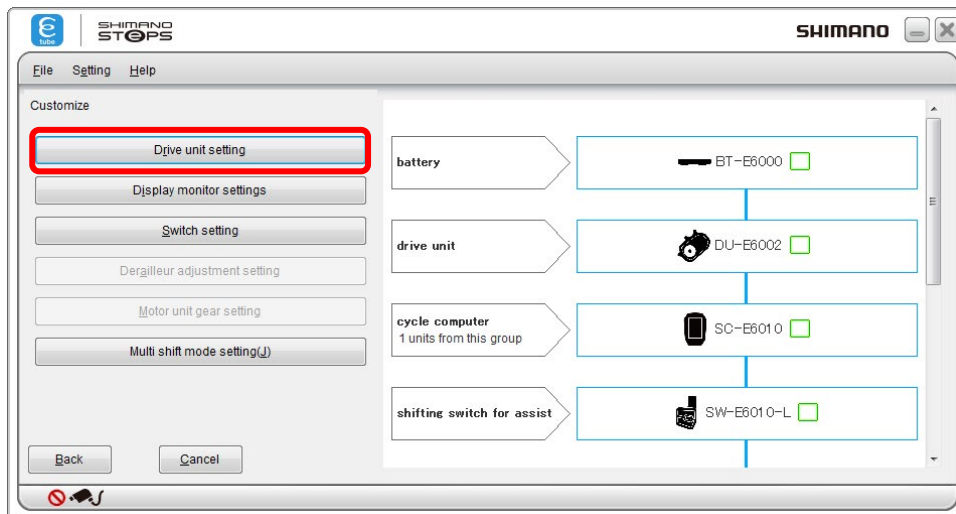
Item	Description
[Light connection]	When connecting lights, set [Yes]; when not connecting lights, set [No].
[Remaining light illumination time]	<p>Remaining light illumination time after stopping assist can be set from 0 to 180 minutes (in 5 minute units).</p> <p>If the value is not entered in 5 minute units, it will be set using 5 minute units as follows.</p> <ul style="list-style-type: none"> · 0 to 2 entered for ones digit: 0 · 3 to 7 entered for ones digit: 5 · 8 to 9 entered for ones digit: 10 <p>* Only a value larger than the set value can be set.</p>
[Start mode]	Switch Start mode ON/OFF. Gear position changing is available when ON.
[Maximum assist speed]	The maximum assist speed can be set.
[Riding characteristic]	<p>The type of riding characteristic can be set.</p> <p>For DU-E7000, the riding characteristic setting window is displayed.</p> <p>Changing between BOOST, TRAIL, and ECO is only possible when Customize has been selected.</p>
[AUTO]	<p>Enables/disables automatic gear shifting.</p> <p>These menu settings are only available in DU-E5000/6100/6110.</p>
[Shifting timing]	<p>The shift timing can be set here.</p> <p>This can only be set if the shifting method is electrical.</p>
[Gear shifting advice]	<p>Gear shifting advice can be switched ON/OFF.</p> <p>This can only be set if the shifting method is electrical.</p>
[Maintenance alert]	The Maintenance alert setting window is displayed. The Maintenance alert traveling distance and the Maintenance alert date can be set.

SHIMANO STEPS E6000 series

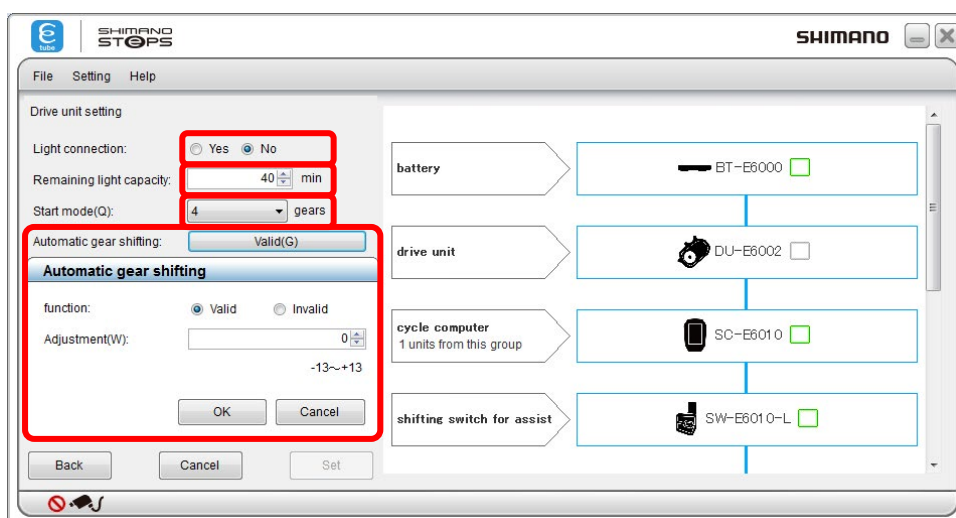
1. Click [Customize] in the main menu screen.



2. Click [Drive unit setting] in the customize menu screen.



3. Click each item to select the settings description.



The items that can be set are as follows.

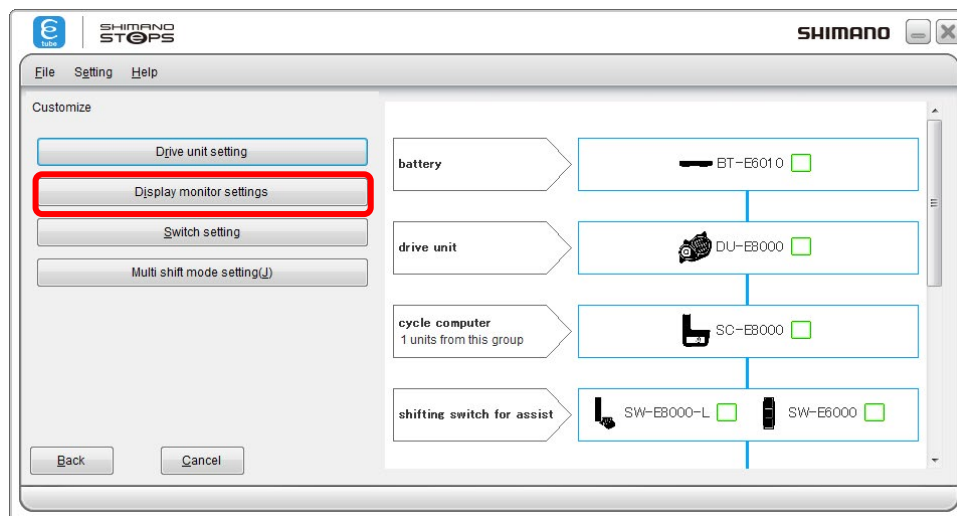
Item	Description
[Light connection]	Select [Yes] when connecting a light or [No] when not connecting a light.
[Remaining light illumination time]	Remaining light illumination time after stopping assist can be set from 0 to 180 minutes (in 5 minute units). If the value is not entered in 5 minute units, it will be set using 5 minute units as follows. <ul style="list-style-type: none"> · 0 to 2 entered for ones digit: 0 · 3 to 7 entered for ones digit: 5 · 8 to 9 entered for ones digit: 10 * Only a value larger than the set value can be set. This can only be set using DU-E6002/6012.
[Start mode]	Switches the start mode on or off. You can change gear position when on is selected.
[Automatic gear shifting]	The auto shifting setting window is displayed. You can select whether auto shifting is enabled, disabled, and the auto shifting adjust values.

Display monitor settings

Configure the settings of the display monitor.

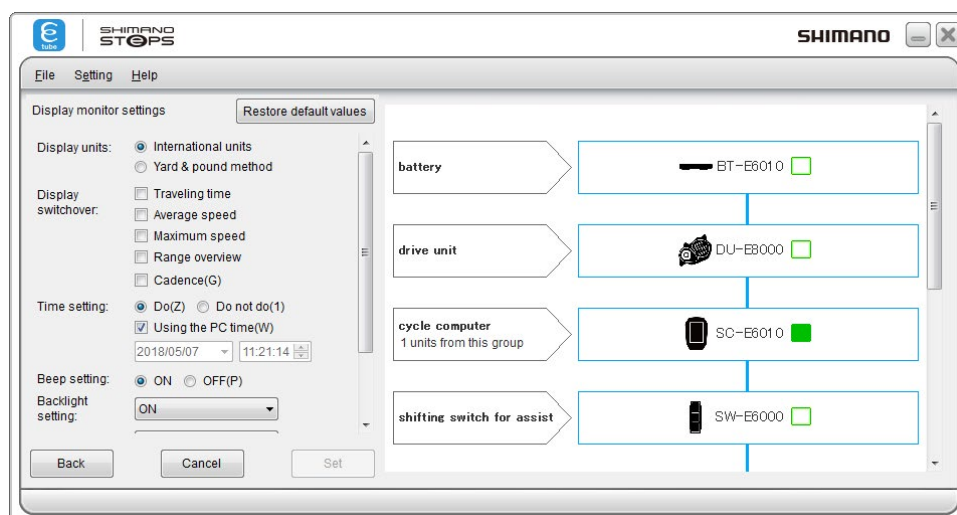
SHIMANO STEPS E8000 series

1. Display the customize menu screen.
2. Click [Display monitor settings] in the customize menu screen.

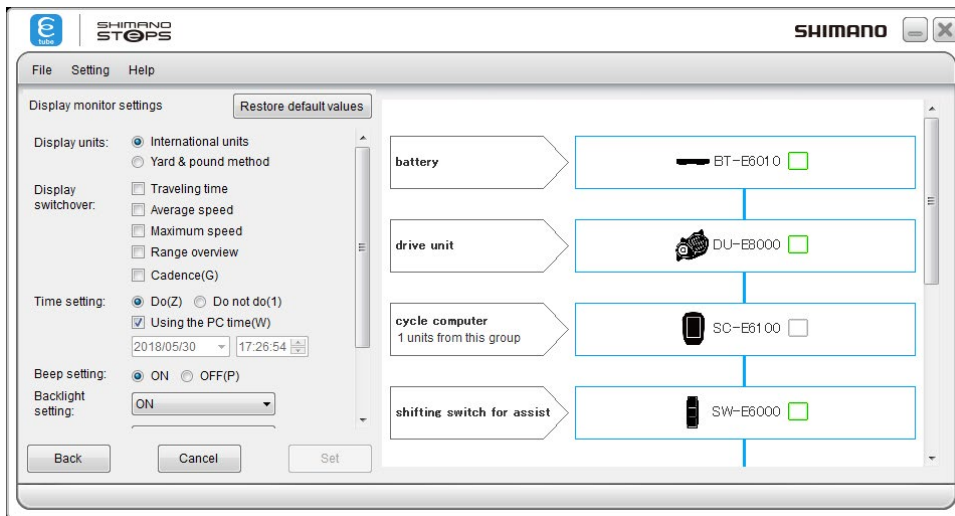


3. Click each item to select the settings description.

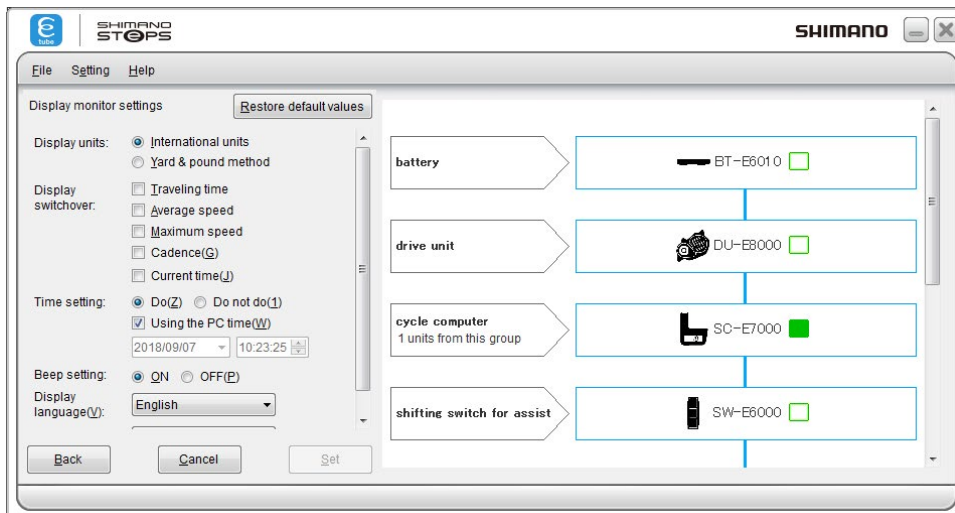
<SC-E6010>



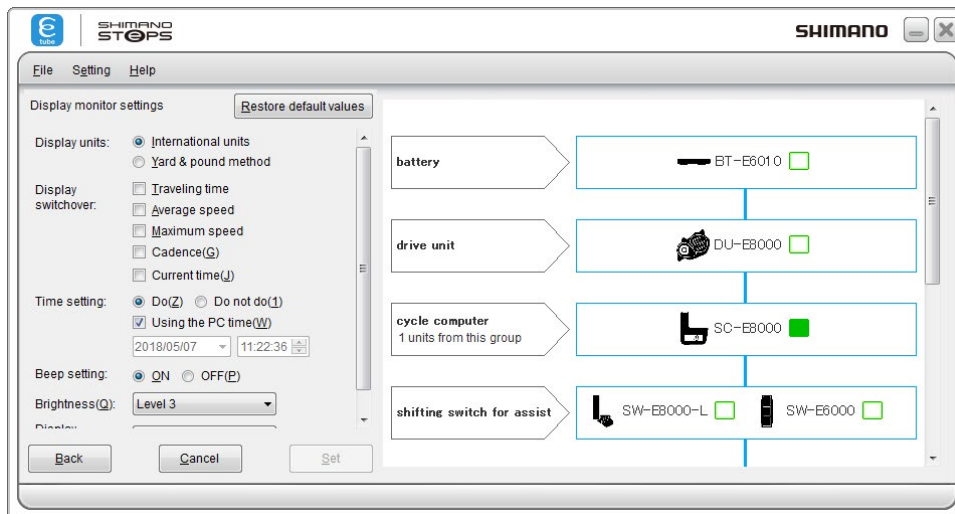
<SC-E6100>



<SC-E7000>



<SC-E8000>



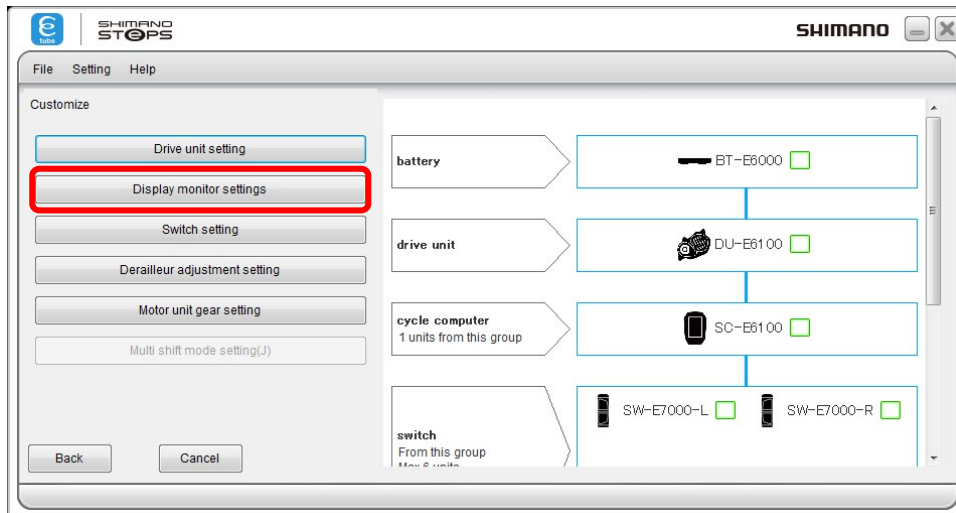
The items that can be set are as follows.

Item	Description
[Display units]	You can select the International System (km) or the Imperial System (mile) of units.
[Display switchover]	You can select whether to display each of the items [Traveling time], [Average speed], [Maximum speed], [Range overview], [Cadence], and [Current time] In addition, [Range overview] can only be set SC-E6010/SC-E6100, and [Current time] can only be set using SC-E7000/SC-E8000.
[Time setting]	Application settings are updated based on the values in time settings. If "Yes" is selected under time settings and the "Use PC time" option is selected, the application setting "Automatically synchronize the time setting of the cycle computer" will be selected. In all other situations, it will be deselected.
[Beep setting]	You can select whether to turn the beep on or off.
[Backlight setting]	You can set the backlight to on, off, or automatic. This can only be set using SC-E6010/SC-E6100.
[Brightness]	You can select backlight brightness from among 5 levels. This menu can only be set using SC-E6010/SC-E6100/SC-E8000.
[Display language]	You can select the display language from [English], [French], [German], [Dutch], [Italian], and [Spanish].
[Font color]	The font color can be set to white or black. This menu can only be set using SC-E6010/SC-E6100/SC-E7000.

- * Click [Restore default values] and then [Set] to reset the settings to default.

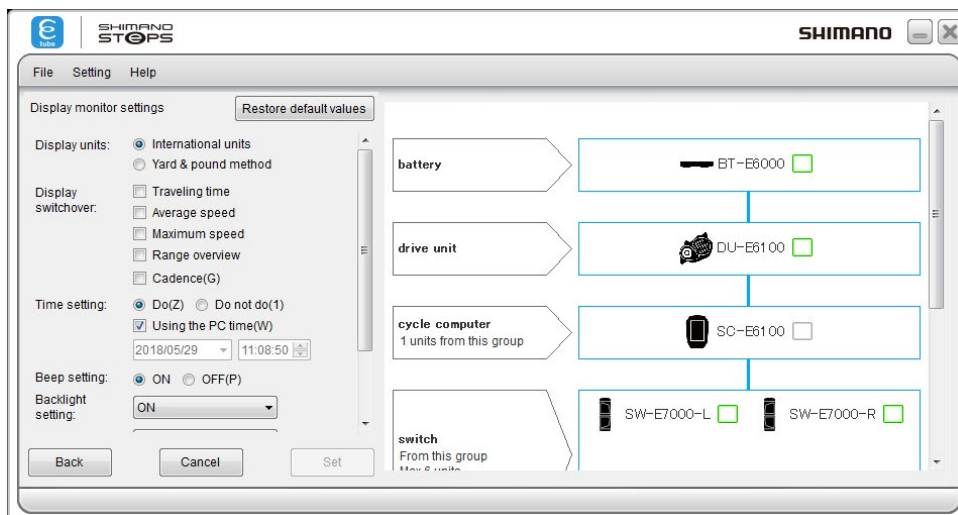
SHIMANO STEPS E7000/E6100/E5000 series

1. Display the customize menu screen.
2. Click [Display monitor settings] in the customize menu screen.

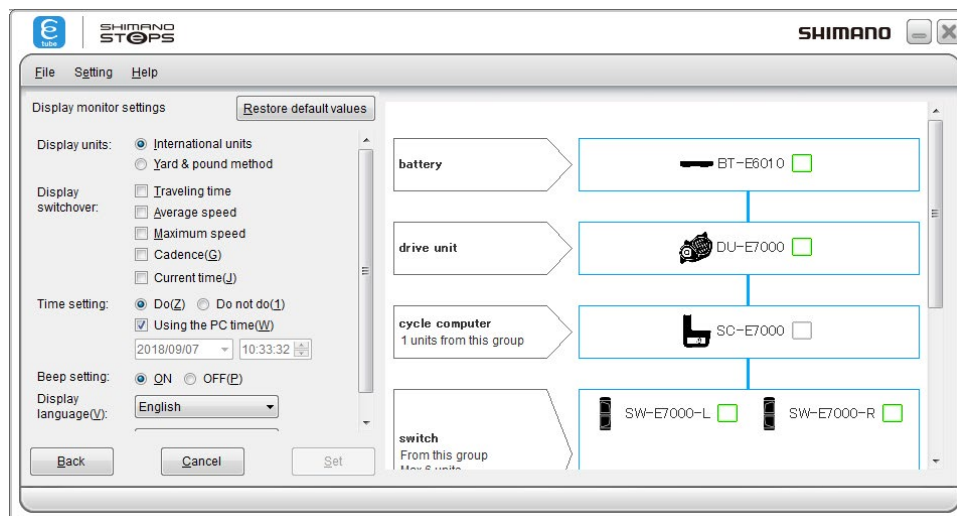


3. Click each item to select the settings description.

<SC-E6100>



<SC-E7000>



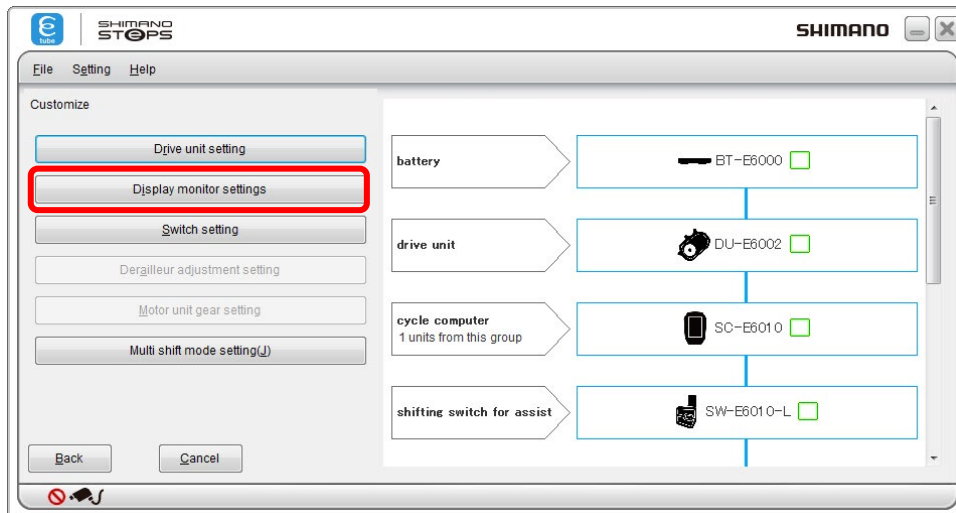
The items that can be set are as follows.

Item	Description
[Display units]	You can select either the international unit (km) or the yard & pound method (miles) can be selected.
[Display switchover]	You can select whether to display each of the items [Traveling time], [Average speed], [Maximum speed], [Range overview], [Cadence], and [Current time]. In addition, [Range overview] can only be set SC-E6100, and [Current time] can only be set using SC-E7000.
[Time setting]	Application settings are updated based on the values in time settings. When time setting is set to [Do] and Use PC time is checked, the [Automatically synchronize the time setting of the cycle computer] option in application settings will be updated to checked. In all other situations, it will be deselected.
[Beep setting]	You can select whether to turn the beep on or off.
[Backlight setting]	You can set the backlight to on, off, or automatic. This menu can only be set using SC-E6100.
[Brightness]	You can select backlight brightness from among 5 levels. This menu can only be set using SC-E6100.
[Display language]	You can select the display language from [English], [French], [German], [Dutch], [Italian], and [Spanish].
[Font color]	The font color can be set to white or black.

- * Click [Restore default values] and then [Set] to reset the settings to default.

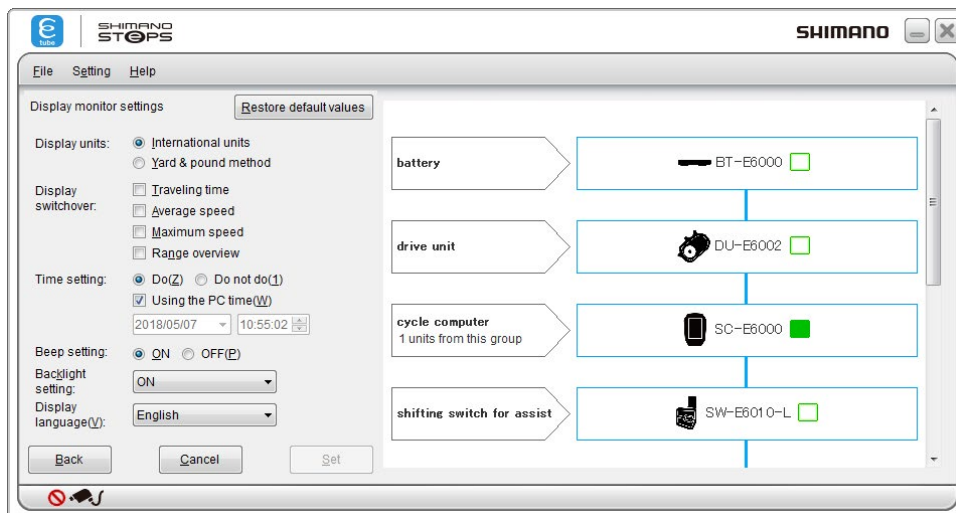
SHIMANO STEPS E6000 series

1. Display the customize menu screen.
2. Click [Display monitor settings] in the customize menu screen.



3. Click each item to select the settings description.

<SC-E6000>





The items that can be set are as follows.

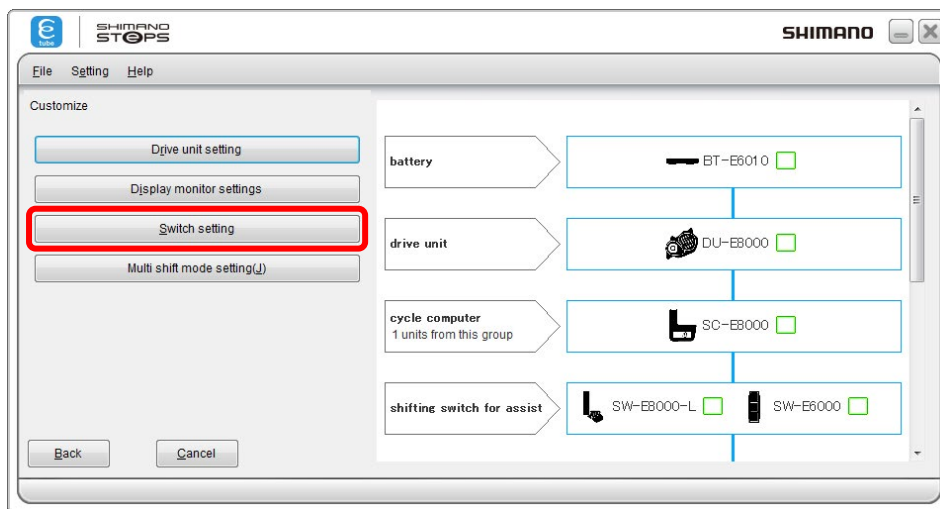
Item	Description
[Display units]	You can select the International System (km) or the Imperial System (mile) of units.
[Display switchover]	You can select whether to display the items [Traveling time], [Average speed], [Maximum speed], and [Range overview].
[Time setting]	Application settings are updated based on the values in time settings. If "Yes" is selected under time settings and the "Use PC time" option is selected, the application setting "Automatically synchronize the time setting of the cycle computer" will be selected. In all other situations, it will be deselected.
[Beep setting]	You can select whether to turn the beep on or off.
[Backlight setting]	You can select whether to turn the backlight on, off or manual.
[Brightness]	You can select backlight brightness from among 5 levels. This menu can only be set using SC-E6010.
[Display language]	You can select the display language from [English], [French], [German], [Dutch], [Italian], and [Spanish].
[Font color]	The font color can be set to white or black. This menu can only be set using SC-E6010.

- * Click [Restore default values] and then [Set] to reset the settings to default.

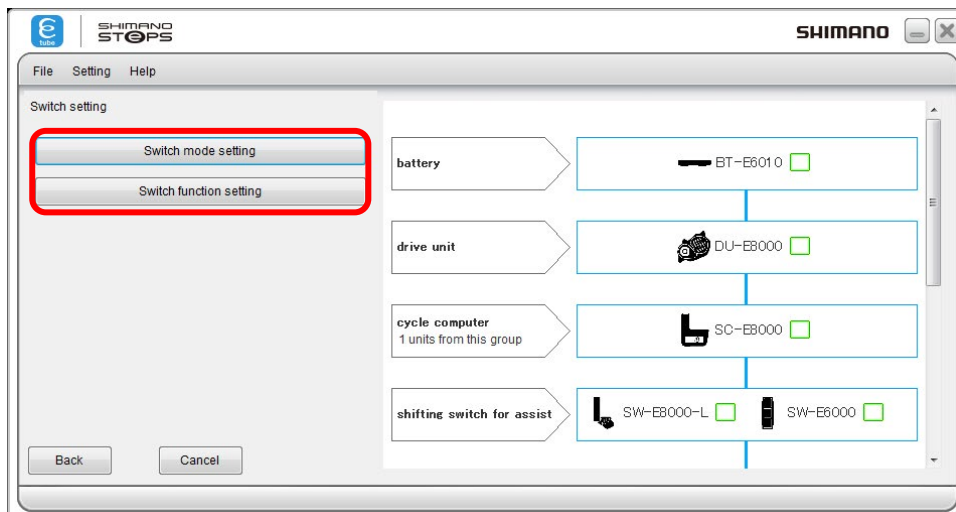
Switch setting

SHIMANO STEPS E8000 series

1. Display the customize menu screen.
2. Click [Switch setting] in the customize menu screen.

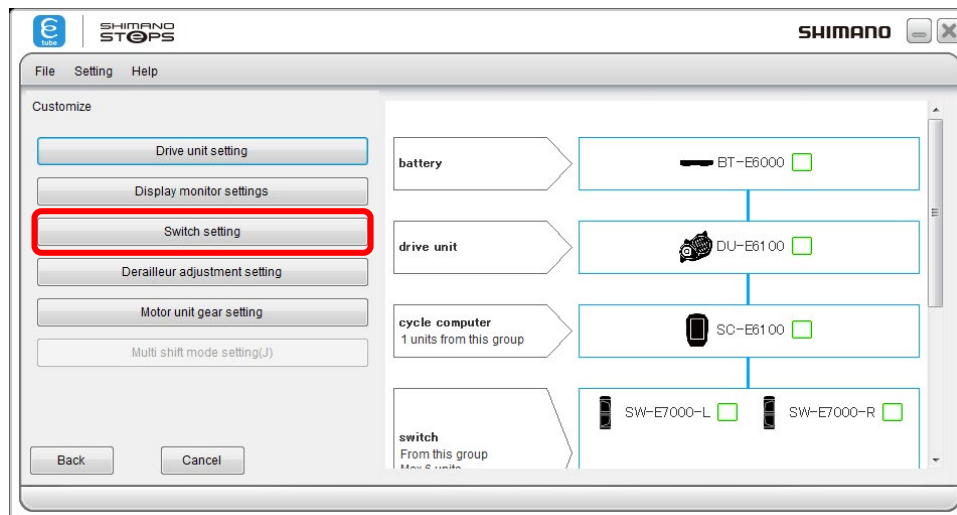


3. Click [Switch mode setting] or [Switch function setting] to go to each setting screen.



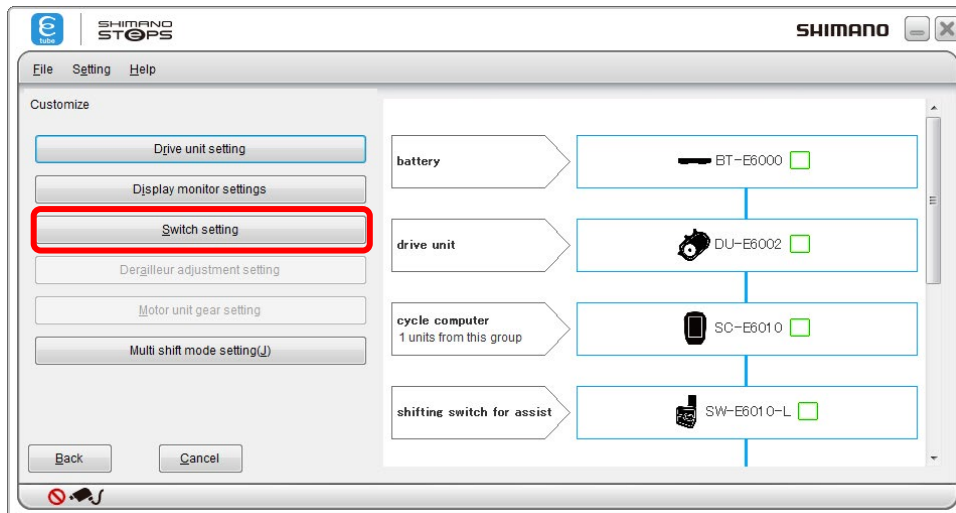
SHIMANO STEPS E7000/E6100/E5000 series

1. Display the customize menu screen.
2. Click [Switch setting] in the customize menu screen.

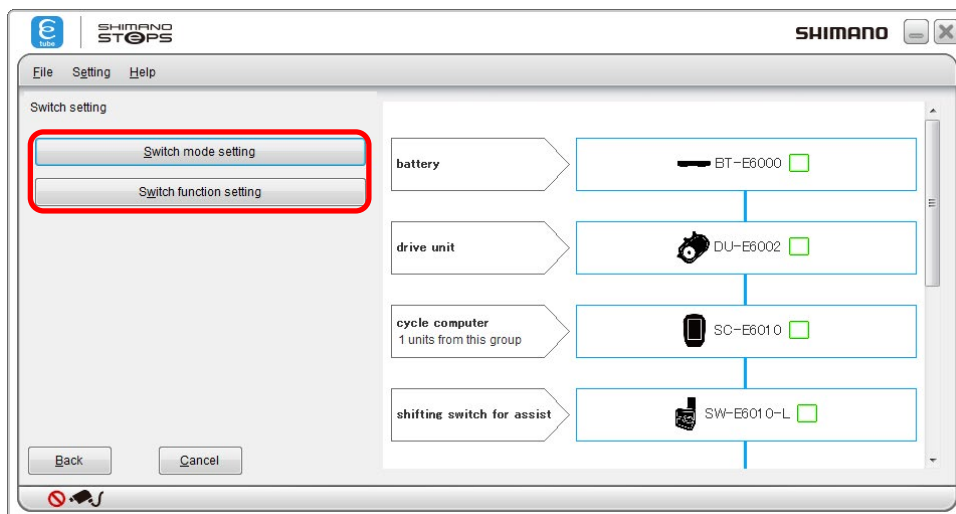


SHIMANO STEPS E6000 series

1. Display the customize menu screen.
2. Click [Switch setting] in the customize menu screen.



3. Click [Switch mode setting] or [Switch function setting] to go to each setting screen.



Switch mode setting

Refer to the following when setting the switch mode in the SHIMANO STEPS E8000/E6000 series.

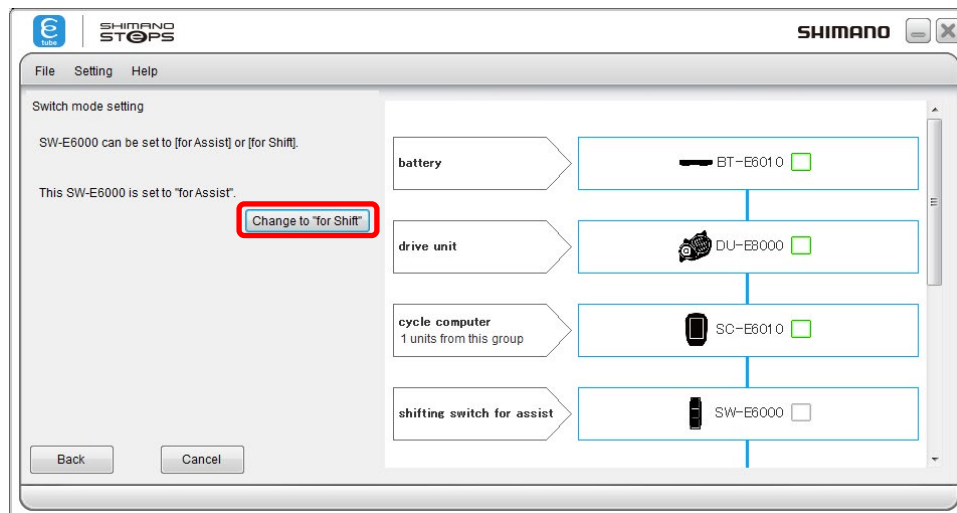
SHIMANO STEPS E8000 series

SW-E6000 or SW-E6010-L can be used as the assist mode switch or gear shifting switch.

You can select which mode to use.

On the E-TUBE PROJECT screen, the assist mode switch is indicated as [SW-E6000 for Assist] or [SW-E6010-L for Assist] and the gear shifting switch is indicated as [SW-E6000] or [SW-E6010-L].

Configure the setting according to the instructions displayed on the screen.



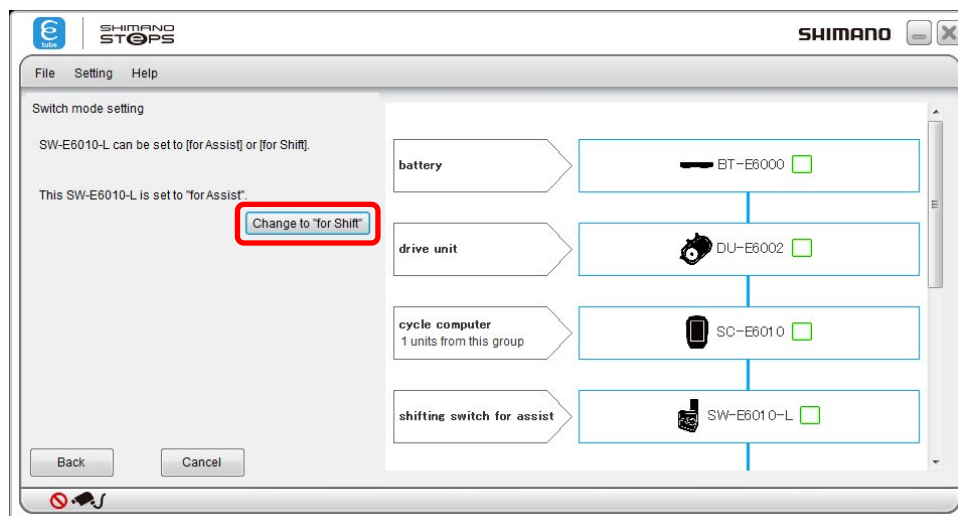
SHIMANO STEPS E6000 series

SW-E6000, SW-E6010-L, or SW-M9050-L can be used as the assist mode switch or gear shifting switch.

You can select which mode to use.

On the E-TUBE PROJECT screen, the assist mode switch is indicated as [SW-E6000 for Assist], [SW-E6010-L for Assist], or [SW-M9050-L for Assist], and the gear shifting switch is indicated as [SW-E6000], [SW-E6010-L], or [SW-M9050-L].

Configure the setting according to the instructions displayed on the screen.

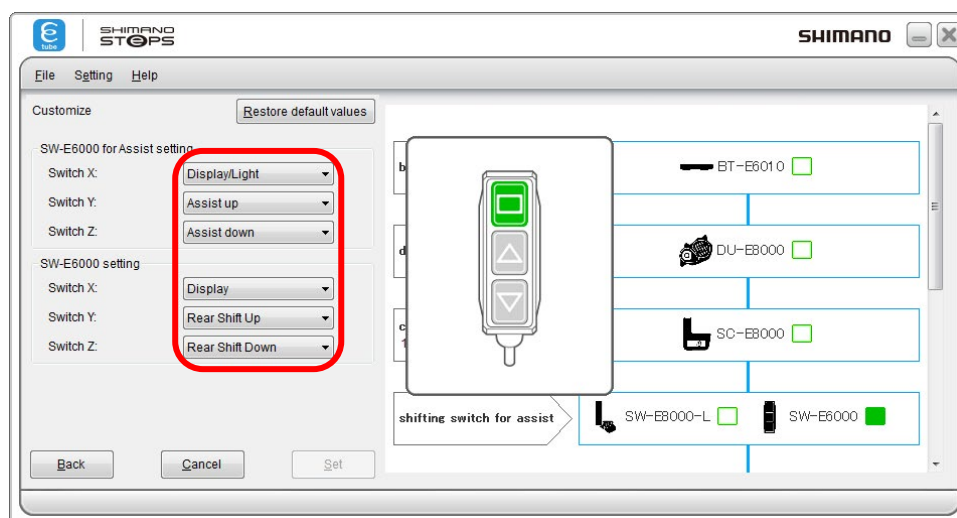


Switch function setting

SHIMANO STEPS E8000 series

You can change the functions to assign to switches (X), (Y), and (Z) (or switch A).

1. Display the customize menu screen.
2. Click [Switch setting] in the customize menu screen.
3. Select the desired setting for each switch.



- * Click [Restore default values] and then [Set] to reset the switch functions to default.
- * Whether to assign either the D-FLY function or the gear shifting function to the switch can be selected.
- When performing D-Fly setting



The items that can be set are as follows.

Item	Description
[D-FLY Ch.1]	Assign Ch. 1.
[D-FLY Ch.2]	Assign Ch. 2.
[D-FLY Ch.3]	Assign Ch. 3.
[D-FLY Ch.4]	Assign Ch. 4.

- When performing gear shifting setting



The items that can be set are as follows.

SW-E6000 for Assist, SW-E6010-L

Item	Description
[Display/Light]	Switch the screens of the display monitor. * Holding down the switch turns the light on or off.
[ASSIST UP]	Raise the level of assistance in the assist mode.
[ASSIST DOWN]	Lower the level of assistance in the assist mode.

- * This setting is effective only when [Yes] is selected for light connection in the drive unit setting.

SW-E6000, SW-E6010-R

Item	Description
[Display]	Switch the screens of the display monitor.
[Rear Shift Up]	The internal geared hub shifts from a light gear to a heavier gear.
[Rear Shift Down]	The internal geared hub shifts from a heavy gear to a lighter gear.

Switches other than those above

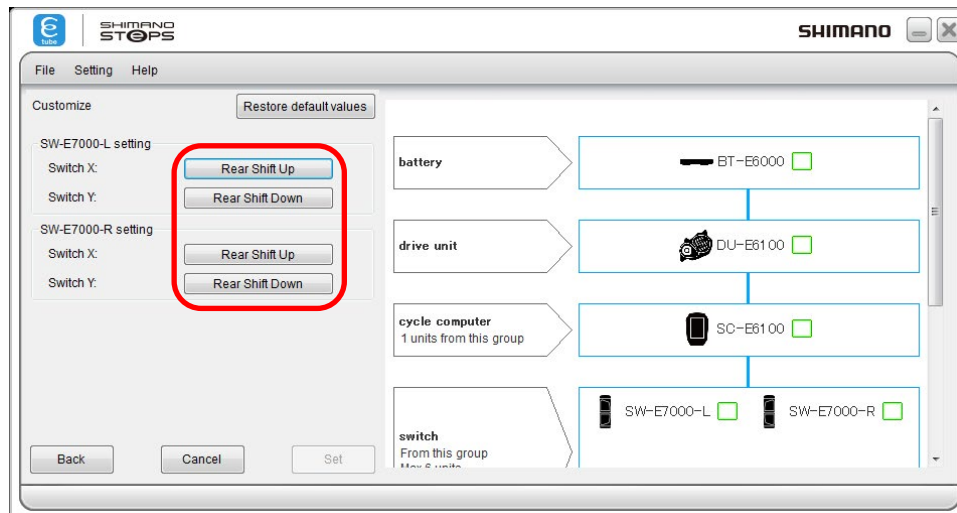
Item	Description
[Rear Shift Up]	The internal geared hub shifts from a light gear to a heavier gear.
[Rear Shift Down]	The internal geared hub shifts from a heavy gear to a lighter gear.

- * Please be aware of the following when setting functions.
 - D-FLY function setting is not available when the following conditions are not satisfied.
 - When only the switch is connected
When the version of firmware for the switch to be set supports D-FLY.
 - When devices other than the switch are also connected
D-FLY function setting is available when all of the following three conditions are satisfied.
 1. When the version of firmware for the switch to be set supports D-FLY.
 2. A wireless device compatible with D-FLY function (SC-E6100/SC-E7000/EW-EN100) is connected.
 3. A D-FLY function compatible master (DU-E8000) is connected, and the firmware version supports D-FLY.
- 4. Click [OK] to close the dialog box and click [Set] to complete the setting.

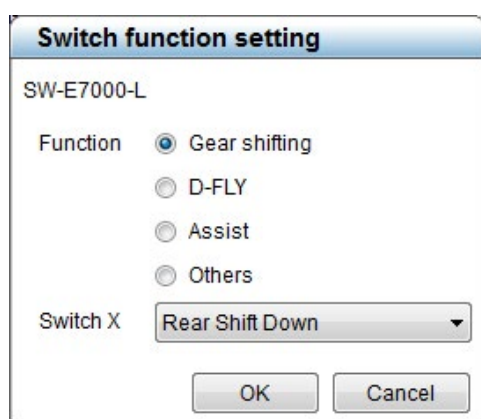
SHIMANO STEPS E7000/E6100/E5000 series

The function to assign Switch X, Switch Y, Switch Z (or Switch A) can be changed.

1. Display the customize menu screen.
2. Click [Switch setting] in the customize menu screen.
3. Select the desired setting for each switch.



- * Clicking [Restore default values] and then [Set] restores each of the switches functions to default.
- * Whether to assign any of the D-FLY function, gear shifting function, assist function, or other functions to the switch can be selected.



The items that can be set are as follows.

Functions	Item	Description
Gear shifting	[Rear Shift Up]	The gears shift from a light gear to a heavy gear.
	[Rear Shift Down]	The gears shift from a heavy gear to a light gear.
D-FLY	[D-FLY Ch. 1]	Assign Ch. 1.
	[D-FLY Ch. 2]	Assign Ch. 2.
	[D-FLY Ch. 3]	Assign Ch. 3.
	[D-FLY Ch. 4]	Assign Ch. 4.
Assist	[Assist up]	Raise the level of assistance in the assist mode.
	[Assist down]	Lower the level of assistance in the assist mode.
Others	[Display]	Switches the screens of the display monitor.
	[Display/Light]	Switches the screens of the display monitor. * Holding down the switch turns the light on or off.

- * Only valid when the Light connection in Drive unit settings is set to [Yes].
- * Please be aware of the following when setting functions.
 - D-FLY function setting is not available when the following conditions are not satisfied.
When the version of firmware for the switch to be set supports D-FLY.
 - When D-FLY function setting is not available (when the above conditions are not satisfied), the items which can be set are as follows.

➤ SW-S705/SW-M8050-L/SW-M9050-L/SW-M9050-R/SW-M8050-R

Item	Description
[Rear Shift Up]	The gears shift from a light gear to a heavy gear.
[Rear Shift Down]	The gears shift from a heavy gear to a light gear.

➤ E6000 (for Shift)

Item	Description
[Rear Shift Up]	The gears shift from a light gear to a heavy gear.
[Rear Shift Down]	The gears shift from a heavy gear to a light gear.
[Display]	Switches the screens of the display monitor.

➤ SW-E6000 (for Assist)

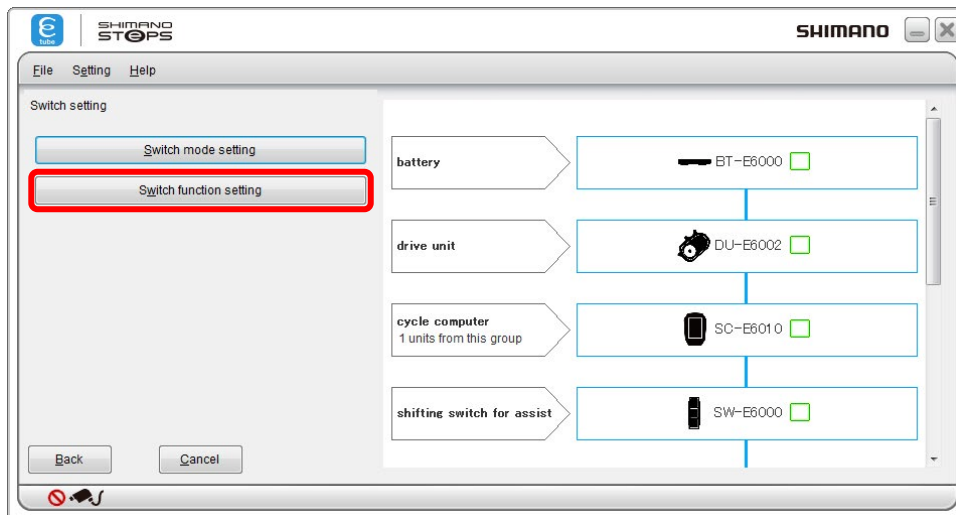
Item	Description
[Assist up]	Raise the level of assistance in the assist mode.
[Assist down]	Lower the level of assistance in the assist mode.
[Display/Light]	Switches the screens of the display monitor. * Holding down the switch turns the light on or off.

* Only valid when the Light connection in Drive unit settings is set to [Yes].

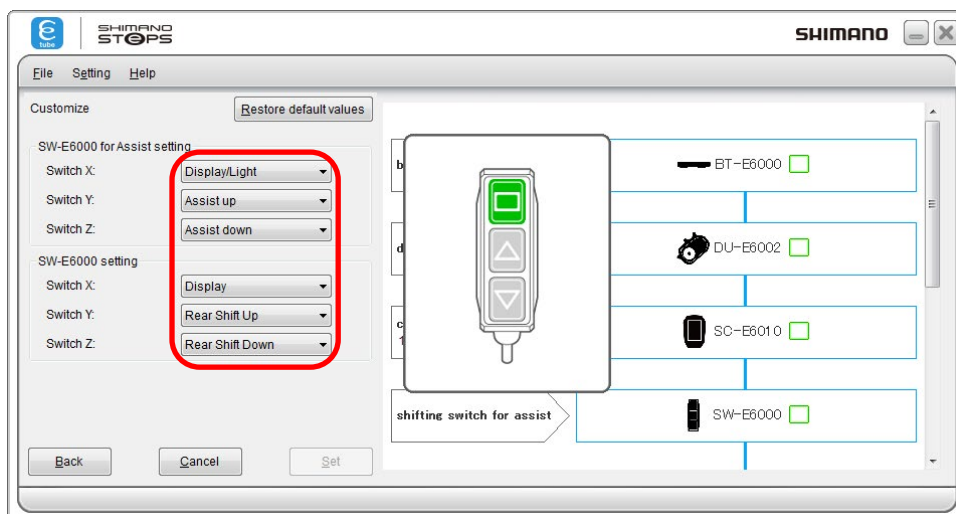
4. Click [OK] to close the dialog box and click [Set] to complete the setting.

SHIMANO STEPS E6000 series

You can change the functions to assign to switches (X), (Y), and (Z) (or switch A).



1. Select the desired setting for each switch.



- * Click [Restore default values] and then [Set] to reset the switch functions to default.

SW-E6000 for Assist、SW-E6010-L

Item	Description
[Display/Light]	Switch the screens of the display monitor. * Holding down the switch turns the light on or off.
[ASSIST UP]	Raise the level of assistance in the assist mode.
[ASSIST DOWN]	Lower the level of assistance in the assist mode.

- * This setting is effective only when [Yes] is selected for light connection in the drive unit setting.

SW-E6000、SW-E6010-R

Item	Description
[Display]	Switch the screens of the display monitor.
[Rear Shift Up]	The internal geared hub shifts from a light gear to a heavier gear.
[Rear Shift Down]	The internal geared hub shifts from a heavy gear to a lighter gear.

Switches other than those above

Item	Description
[Rear Shift Up]	The internal geared hub shifts from a light gear to a heavier gear.
[Rear Shift Down]	The internal geared hub shifts from a heavy gear to a lighter gear.

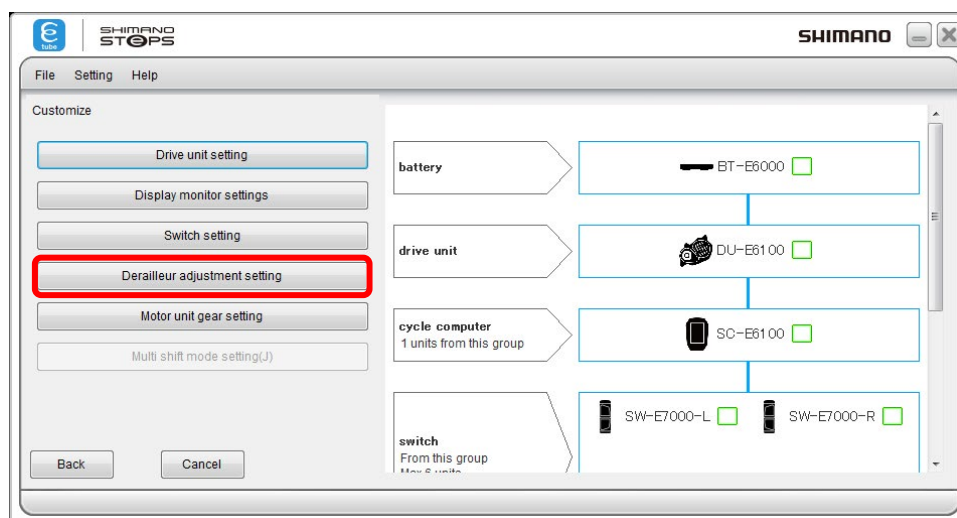
Derailleur adjustment setting

Refer to the following when adjusting the gears in the SHIMANO STEPS E7000/E6100/E5000/E6000 series.

- * Usually, this operation is not necessary.

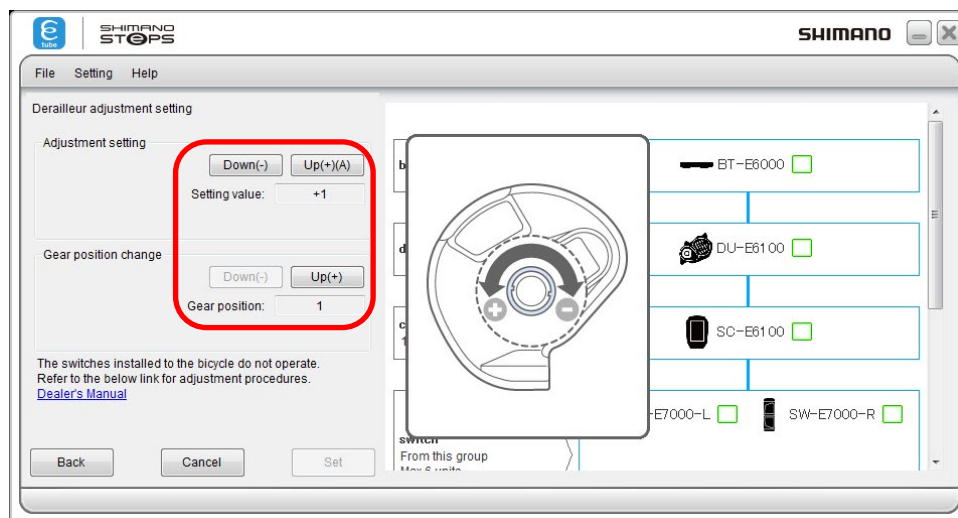
SHIMANO STEPS E7000/E6100/E5000 series

1. Display the customize menu screen.
2. Click [Derailleur adjustment setting] in the customize menu screen.



3. Click [Down] / [Up] to adjust.

- Displays the current set value in [Setting Value]. (-4 to +4)
- Displays the current number of sprockets in [Gear position]. (Either of 1-5, 1-8, or 1-11)
- * During this adjustment work, gear shifting will not occur even if the shift switch of the switch for a model name like SW-XXXX is operated.
- * The crank does not need to be rotated for operations related to adjustment and gear-shifting.



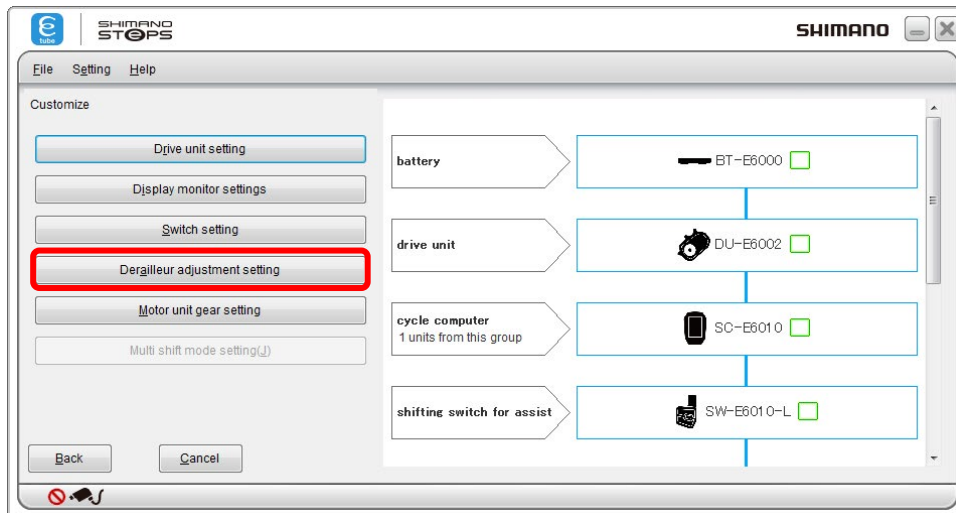
The settings to be adjusted are as follows.

	Item	Description
[Adjustment setting]	[Down]	The parts which control gear shifting rotate in the lighter gear direction (toward the right-hand side, the direction where "-" is displayed).
	[Up]	The parts which control gear shifting rotate in the heavier gear direction (toward the left-hand side, the direction where "+" is displayed).
	[Setting value] is the current set value. (-4 to +4)	
[Gear position change]	[Down]	Gears will be shifted to a lighter gear.
	[Up]	Gears will be shifted to a heavier gear.
	The current gear position is displayed in [Gear position] (Either of 1-5, 1-8, or 1-11)	

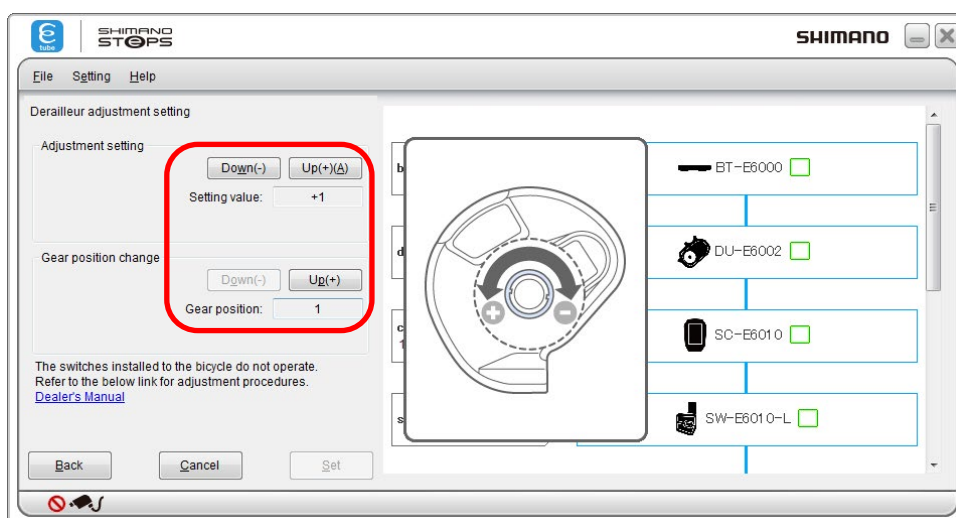
4. Click [Set] to complete adjustment.

SHIMANO STEPS E6000 series

1. Display the customize menu screen.
2. Click [Derailleur adjustment setting] in the customize menu screen.



3. Click [Down] / [Up] to adjust.
 - Displays the current set value in [Setting Value]. (-4 to +4)
 - Displays the current number of sprockets in [Gear position]. (Either of 1-5, 1-8, or 1-11)
 - * During this operation, the derailleur will not operate even when the shift switch of SW-S705, SW-E6000, SW-E6010-L, or SW-M9050-L is operated.
 - * The crank does not need to be rotated for operations related to adjustment and gear-shifting.



The settings to be adjusted are as follows.

	item	Description
[Adjustment setting]	[Down]	The components that control gear-shifting rotate in the direction to indicate a lighter gear (clockwise, direction of "-" indication).
	[Up]	The components that control gear-shifting rotate in the direction to indicate a heavier gear (counterclockwise, direction of "+" indication).
	[Setting value] is the current set value. (-4 to +4)	
[Gear position change]	[Down]	Gears will be shifted to a lighter gear.
	[Up]	Gears will be shifted to a heavier gear.
	[Gear position] is the current gear position. (Either of 1-5, 1-8, or 1-11)	

4. Click [Set] to complete adjustment.

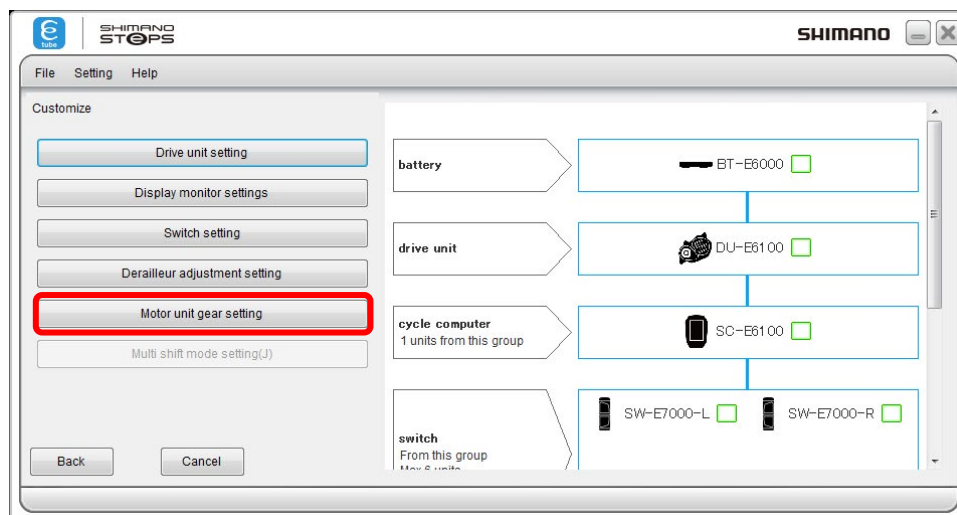
Motor unit gear setting

Refer to the following when performing motor unit gear setting in the SHIMANO STEPS E7000/E6100/E5000/E6000 series.

SHIMANO STEPS E7000/E6100/E5000 series

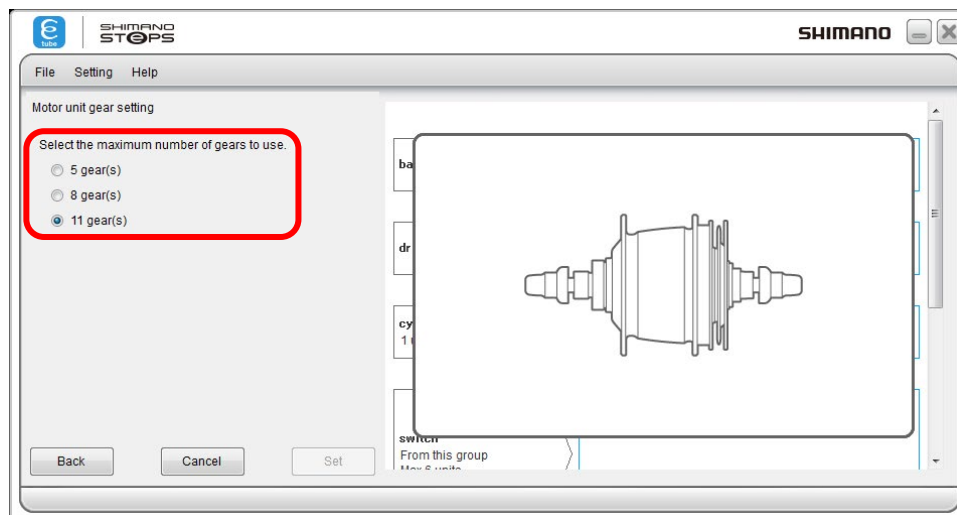
The use of a hub of the switch for a model name like SW-XXXX can be enabled through the settings. These settings can be configured with the motor unit gear setting.

- * Before making the motor unit gear setting, check the derailleur to be installed.
- 1. Display the customize menu screen.
- 2. Click [Motor unit gear setting] in the customize menu screen.



The items that can be set are as follows.

Item	Description
[5 gear(s)]	Select this when MU-UR500 is installed to the switch for a model name like SW-XXXX.
[8 gear(s)]	Select this when MU-S705/MU-UR500 is installed to SG-S505 or SG-C6060.
[11 gear(s)]	Select this when MU-S705/MU-UR500 is installed to SG-S705.

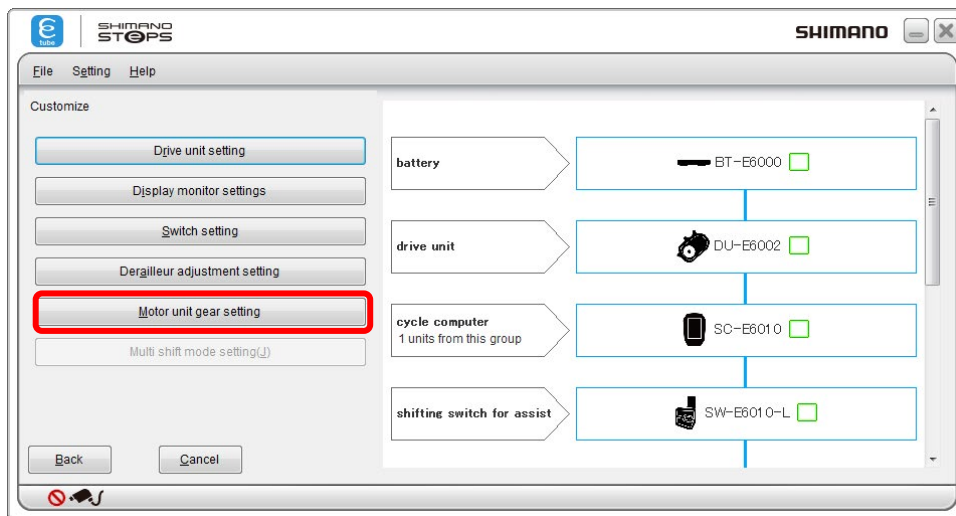


3. Click any setting and then [Set] in the motor unit gear setting screen.

SHIMANO STEPS E6000 series

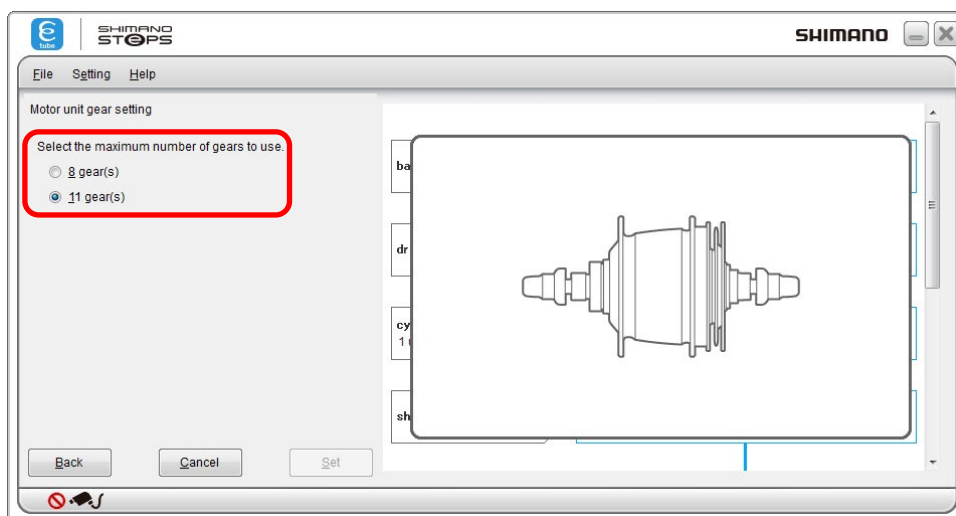
The use of both SG-S705 (11-gear) and SG-S505 (8-gear) hubs with MU-S705/MU-UR500 can be enabled through the settings. These settings settingd can be made with the motor unit gear settings.

- * Before making the motor unit gear setting, check the derailleur to be installed.
- 1. Display the customize menu screen.
- 2. Click [Motor unit gear setting] in the customize menu screen.



The items that can be set are as follows.

Item	Description
[8 gear(s)]	Select this when MU-S705/MU-UR500 is installed to SG-S505/SG-C6060.
[11 gear(s)]	Select this when MU-S705/MU-UR500 has been installed to SG-S705.



- 3. Click any setting and then [Set] in the motor unit gear setting screen.

Multi shift mode setting

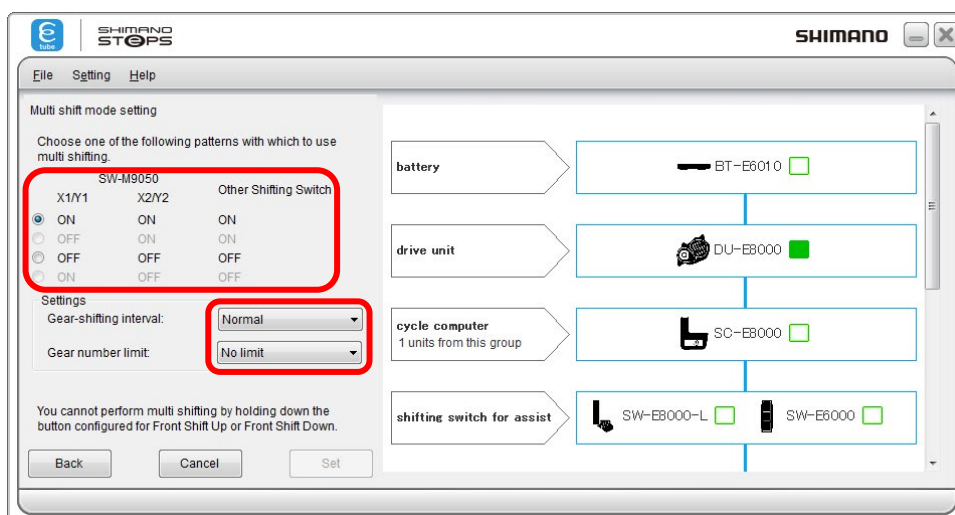
The multi shift mode setting can be changed.

Multi-shifting is a function to shift the rear derailleur by several gears in a row by holding down the shift switch.

- * In order to perform multi shift mode setting, a battery unit needs to be connected in addition to the derailleur.

SHIMANO STEPS E8000 series

1. Display the customize menu screen.
2. Click [Multi shift mode setting] in the customize menu screen.
 - Information relating to the settings in this menu is displayed. Close after confirming the content.
3. Click each item to select the settings description.



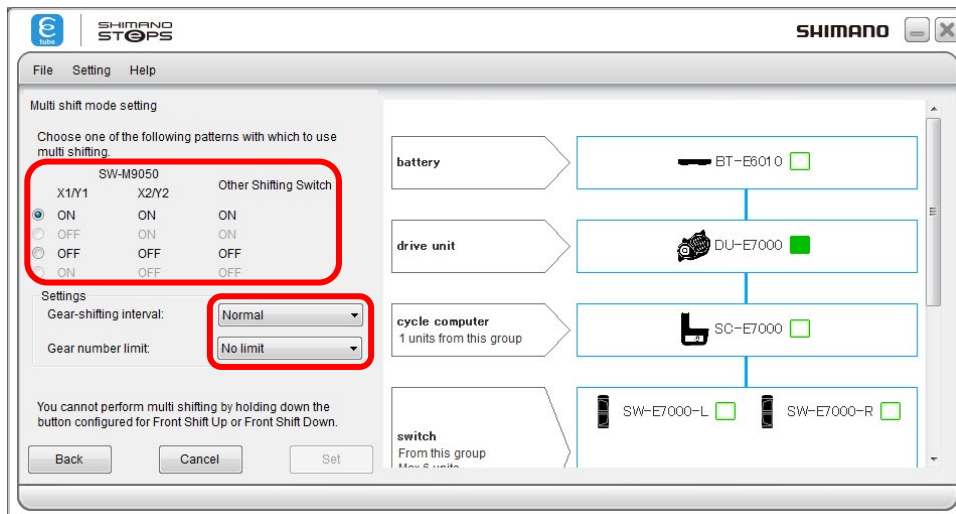
The items that can be set are as follows.

Item	Description
[Multi shift mode setting]	Whether the multi shift mode is used or not can be selected. If you use a 2-step switch, you can select [ON] or [OFF] for each step. For other switches, select [ON] or [OFF] in [Other Shifting Switch].
[Gear-shifting interval]	The gear-shifting interval for multi shift can be selected from five levels.
[Gear number limit]	A limitation can be placed on the number of gears that are shifted with one long press.

4. Click [Set] to complete set up.

SHIMANO STEPS E7000/E6100/E5000 series

1. Display the customize menu screen.
2. Click [Multi shift mode setting] in the customize menu screen.
 - Information relating to the settings in this menu is displayed. Close after checking.
3. Click each item to select the settings description.



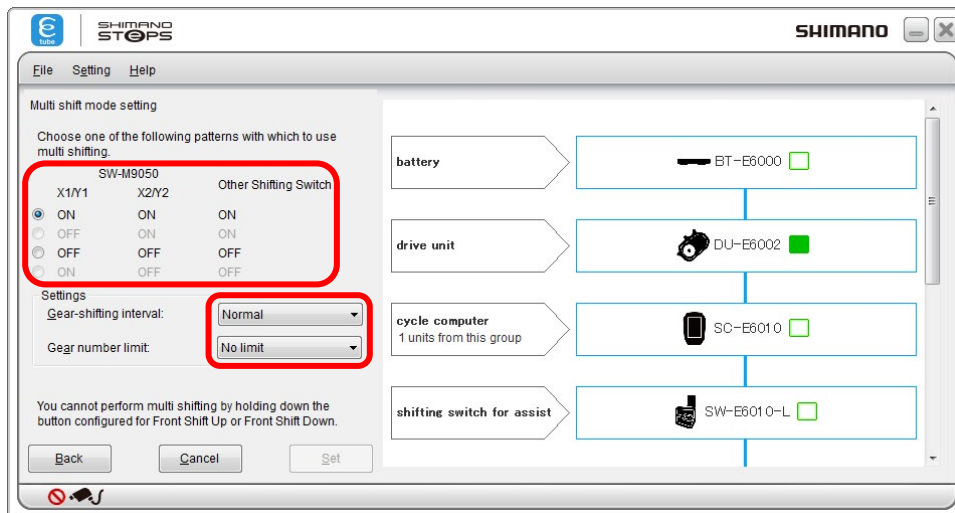
The items that can be set are as follows.

Item	Description
[Multi shift mode setting]	Whether the multi shift mode is used or not can be selected. If you use a 2-step switch, you can select [ON] or [OFF] for each step. For other switches, select [ON] or [OFF] in [Other Shifting Switch].
[Gear-shifting interval]	The gear-shifting interval for multi shift can be selected from five levels.
[Gear number limit]	A limitation can be placed on the number of gears that are shifted with one long press.

4. Click [Set] to complete set up.

SHIMANO STEPS E6000 series

1. Display the customize menu screen.
2. Click [Multi shift mode setting] in the customize menu screen.
 - Information on the settings in this menu is displayed. Close after checking.
3. Click each item to select the settings description.



The items that can be set are as follows.

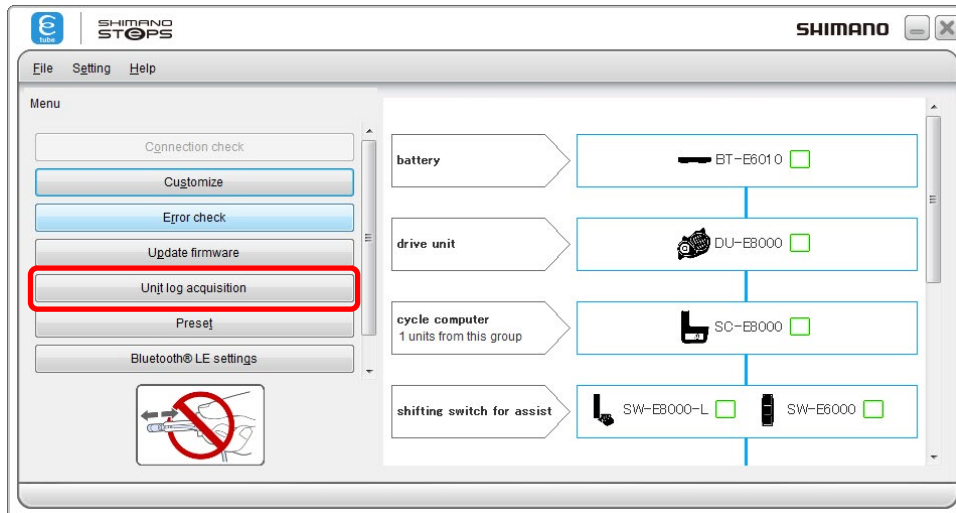
Item	Description
[Multi shift mode setting]	Whether the multi shift mode is used or not can be selected. If you use a 2-step switch, you can select [ON] or [OFF] for each step. For other switches, select [ON] or [OFF] in [Other Shifting Switch].
[Gear-shifting interval]	The gear-shifting interval for multi shift can be selected from five levels.
[Gear number limit]	A limitation can be placed on the number of gears that are shifted with one long press.

4. Click [Set] to complete set up.

UNIT LOG ACQUISITION

SHIMANO STEPS E8000 series

Click [Unit log acquisition] on the main menu screen.



E-BIKE Diagnosis Report
2018/10/02 12:27:12 (UTC+09:00)
E-tube Project Version 3.4.1

Battery

Component information

Unit information	
Unit name	BT-E6010
Firmware version	1.04.0
Log information	
Cycle count	100Times
state of charge	100%
Battery remaining capacity	80%

Drive Unit

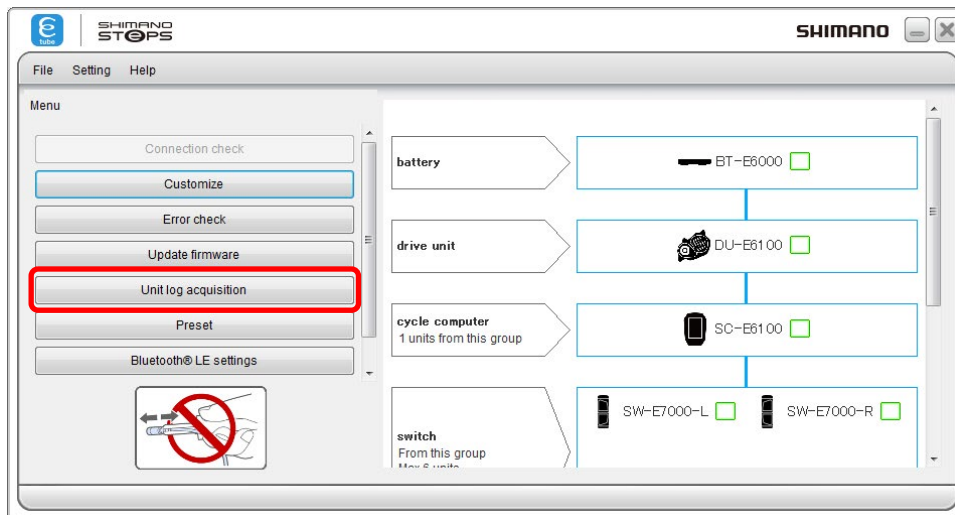
Component information

Unit information	
Unit name	DU-E8000
Firmware version	4.4.5
Log information	
Tyre circumference	2.068mm
Gear shifting type	Derailleur type(chain)
Method	Electrical
Number of front gear teeth	38T
Tooth selection	11-42
Light connection	No
Remaining light capacity	40min
Drive unit installation angle	0°
Riding characteristic	DYNAMIC
Assist mode BOOST	HIGH
Assist mode TRAIL	LOW
Assist mode ECO	ECO
Walk Assist setting	OFF
Destination	Type 1
Gear number limit	No limit
Total distance	0m

- Acquires various data from the connected units and displays them in a report format. The report is displayed in PDF format.
- In the report, you can check the settings of each unit and the battery status.

SHIMANO STEPS E7000/E6100/E5000 series

Click [Unit log acquisition] on the main menu screen.



E-BIKE Diagnosis Report
2018/10/03 9:26:09 (UTC+09:00)
E-tube Project Version 3.4.1

Battery

Component information

Unit information	
Unit name	BT-E6000
Firmware version	1.0.4.0
Log information	
Cycle count	100Times
state of charge	100%
Battery remaining capacity	80%

Drive Unit

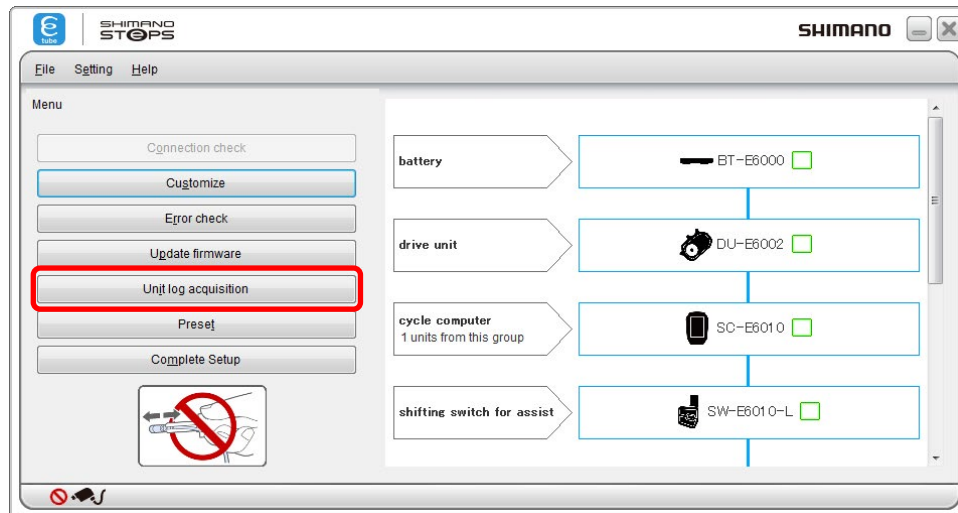
Component information

Unit information	
Unit name	DU-E6100
Firmware version	4.0.0
Log information	
Tyre circumference	2.068mm
Gear shifting type	Internal geared hub (chain)
Method	Electrical
Maximum number of gears	8gears
Number of front gear teeth	44T
Number of rear gear teeth	16T
Light connection	No
Light output	27W
Remaining light capacity	40min
Drive unit installation angle	0°
Start mode	4gears
Maximum assist speed	26km/h
Riding characteristic	COMFORT
Walk Assist setting	OFF
Destination	Type 1
Automatic gear shifting function	Valid
Shift timing	0
Shifting advice	OFF
Total distance	0m

- Acquires various data from the connected units and displays them in a report format. The report is displayed in PDF format.
- In the report, you can check the settings of each unit and the battery status.

SHIMANO STEPS E6000 series

Click [Unit log acquisition] on the main menu screen.



E-BIKE Diagnosis Report
2018/10/02 12:43:32 (UTC+09:00)
E-tube Project Version 3.4.1

Battery

Component information

Unit information	
Unit name	BT-E6000
Firmware version	1.0.4.0
Log information	
Cycle count	100Times
state of charge	100%
Battery remaining capacity	80%

Drive Unit

Component information

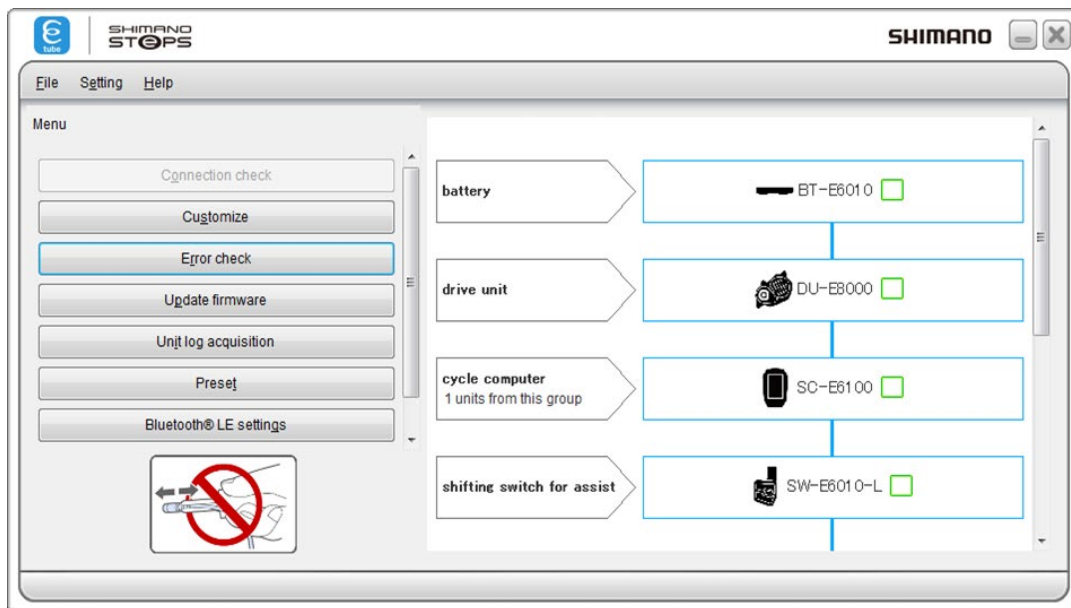
Unit information	
Unit name	DU-E6002
Firmware version	3.2.10
Log information	
Tyre circumference	2.068mm
Gear shifting type	Internal geared hub (chain)
Method	Electrical
Maximum number of gears	8gears
Number of front gear teeth	44T
Number of rear gear teeth	16T
Light connection	No
Remaining light capacity	40min
Drive unit installation angle	0°
Start mode	4gears
Assist pattern	COMFORT
Walk Assist setting	OFF
Destination	Type 1
Automatic gear shifting function	Valid
Automatic gear shifting adjustment	0
Total distance	0m

- Acquires various data from the connected units and displays them in a report format. The report is displayed in PDF format.
- In the report, you can check the settings of each unit and the battery status.

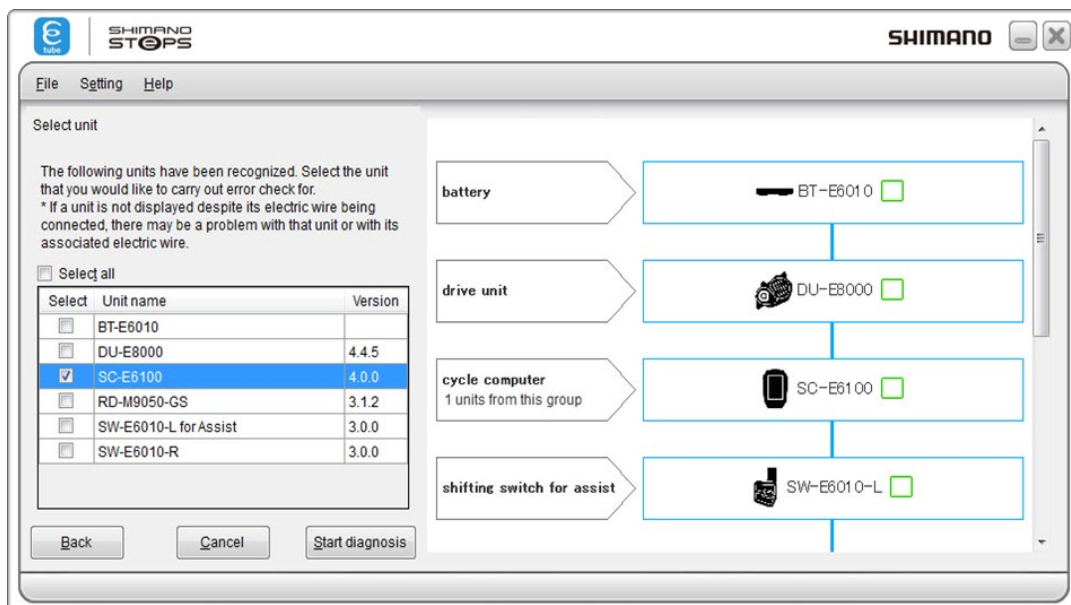
Error check

When performing an error check on a wireless function-compatible SC-E8000, SC-E6100, SC-E7000, EW-EN100, a communication device compatible with ANT connection is necessary as a compatible device. If no communication device is available, please skip diagnosis using the following steps.

Click [Error check] on the main menu screen.

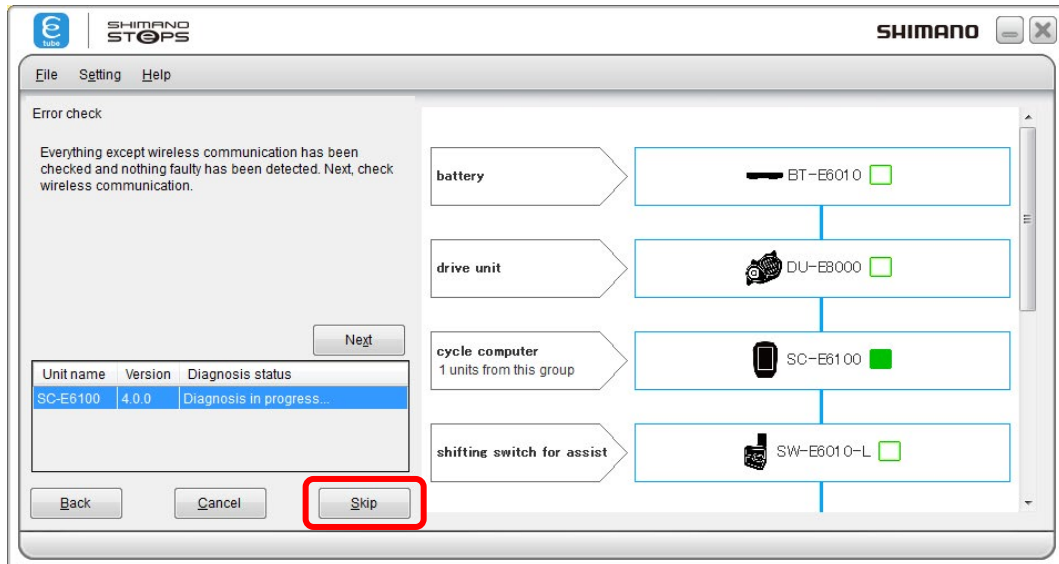


Select the product to perform the error check on.

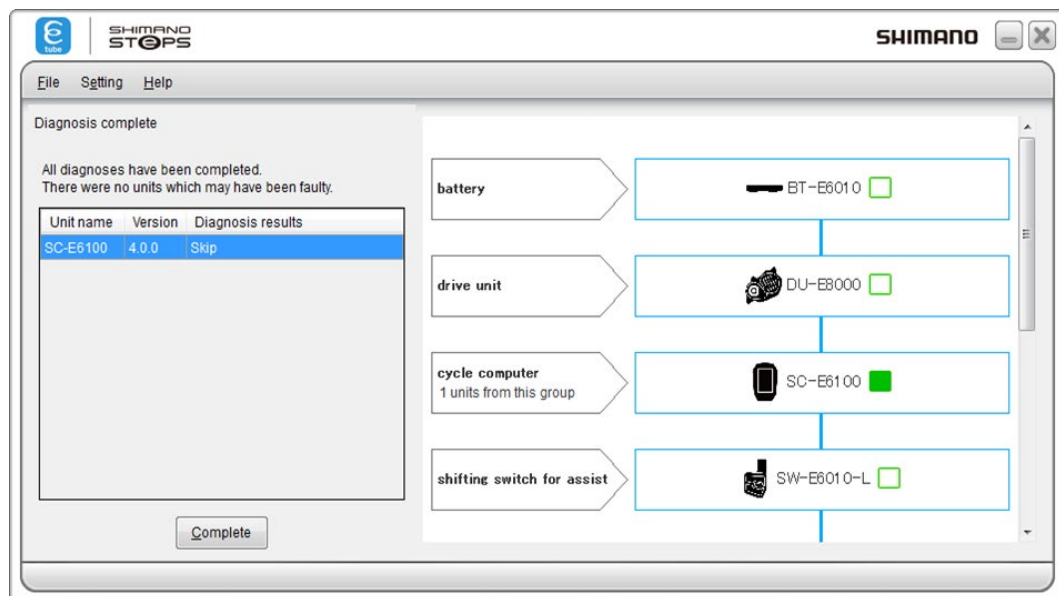


The following screen will be displayed when checking of functions other than wireless communication is complete.

Please select Skip if no communication device is available.



The results will be displayed.



ABOUT THIS DOCUMENT

The contents of this document are subject to revision in the future without notice.

Reproducing or transmitting this document in whole or in part in any form or for any purpose whatsoever without the express written permission of SHIMANO INC. is expressly forbidden. However, this is not to be taken as a limit on the customer's rights under applicable copyright laws.

SHIMANO INC. may own the rights to any patents, patent applications, trademarks, copyrights and any other intangible property rights contained in this document. Unless otherwise specified, the customer is not granted rights to any patents, trademarks, copyrights or any other intangible intellectual property contained in this document.

REGISTERED TRADEMARKS AND TRADEMARKS

Shimano is a trademark or registered trademark of SHIMANO INC. in Japan and other countries.



is a trademark of SHIMANO, INC. in Japan and other countries.

Microsoft®, Windows® 7, Windows® 8, Windows® 10 are registered trademarks or trademarks of Microsoft Corporation in the United States of America and other countries.

All other company names, product names and service names, etc. are the property of their respective owners.

SHIMANO

SHIMANO NORTH AMERICA BICYCLE, INC

One Holland, Irvine, California 92618, U.S.A. Phone: +1-949-951-5003

SHIMANO EUROPE B.V.

High Tech Campus 92, 5656 AG Eindhoven, The Netherlands Phone: +31-402-612222

SHIMANO INC.

3-77 Oimatsu-cho, Sakai-ku, Sakai-shi, Osaka 590-8577, Japan

Please note: specifications are subject to change for improvement without notice. (English)